

## Recombinant Rat ATPIF1 Protein, His-tagged

**Cat. No.** ATPIF1-13R    **Lot. No.** (See product label)

### SPECIFICATION

<b>Product Overview</b>	Recombinant Rat ATPIF1 Protein, fused to His-tag, was expressed in E. coli.
<b>Species</b>	Rat
<b>Source</b>	E.coli
<b>Description</b>	Enables ATPase inhibitor activity. Predicted to be involved in several processes, including mitochondrial depolarization; negative regulation of ATPase activity; and regulation of protein targeting to mitochondrion. Predicted to act upstream of or within positive regulation of mitochondrial outer membrane permeabilization involved in apoptotic signaling pathway and reactive oxygen species metabolic process. Located in mitochondrion. Orthologous to human ATP5IF1 (ATP synthase inhibitory factor subunit 1).
<b>Form</b>	50 mM Tris, 300 mM NaCl, pH 8.0
<b>Molecular Mass</b>	14.4 kDa
<b>AA Sequence</b>	MGSSHHHHHHSSGLVPRGSHMAGSALAVRARLGVWGMRVLQTRGFGSDSSESM DSGAGSIREAGGAFGKREKAEEDRYFREKTREQLAALKKHHEDEIDHHSKEIERLQK QIERHKKKIKYLNSEH
<b>Purity</b>	90%
<b>Storage</b>	Store it under sterile conditions at -20 to -80 centigrade. It is recommended that the

 Tel: 1-631-559-9269    1-516-512-3133

 Email: [info@creative-biomart.com](mailto:info@creative-biomart.com)     Fax: 1-631-938-8127

 45-1 Ramsey Road, Shirley, NY 11967, USA



protein be aliquoted for optimal storage. Avoid repeated freeze-thaw cycles.

**Concentration** 0.1 mg/ml

## GENE INFORMATION

**Gene Name** *Atp5if1* ATP synthase inhibitory factor subunit 1 [ *Rattus norvegicus* (Norway rat) ]

**Official Symbol** *Atp5if1*

**Synonyms** Atpi; IF1PA; Atpif1

**Gene ID** 25392

**mRNA Refseq** NM\_012915

**Protein Refseq** NP\_037047

**MIM** 614981

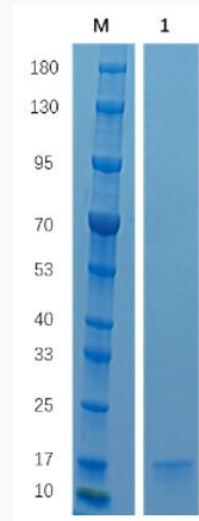
**UniProt ID** Q03344

 Tel: 1-631-559-9269 1-516-512-3133

 Email: [info@creative-biomart.com](mailto:info@creative-biomart.com)  Fax: 1-631-938-8127

 45-1 Ramsey Road, Shirley, NY 11967, USA

**SDS-PAGE**



Reducing 12% SDS-PAGE analysis profile of purified ATPIF1 (CBB stained).

 Tel: 1-631-559-9269 1-516-512-3133

 Email: [info@creative-biomart.com](mailto:info@creative-biomart.com)  Fax: 1-631-938-8127

 45-1 Ramsey Road, Shirley, NY 11967, USA