

## Recombinant Human ATR Protein (Ala2353-Met2644), N-His tagged

Cat. No. ATR-1136H Lot. No. (See product label)

### SPECIFICATION

<b>Product Overview</b>	Recombinant Human ATR (Ala2353-Met2644) fused with the N-His tag was expressed in E. coli.
<b>Species</b>	Human
<b>Source</b>	E.coli
<b>ProteinLength</b>	Ala2353-Met2644
<b>Form</b>	Lyophilized powder/frozen liquid
<b>Molecular Mass</b>	35.90 kDa
<b>Purity</b>	>90% as determined by SDS-PAGE.
<b>Notes</b>	For research use only.
<b>Storage</b>	Use a manual defrost freezer and avoid repeated freeze thaw cycles. Store at 2 to 8 centigrade for one week. Store at -20 to -80 centigrade for twelve months from the date of receipt.
<b>Storage Buffer</b>	0.01M PBS, pH 7.4, 0.02% NLS
<b>Reconstitution</b>	Reconstitute in sterile water for a stock solution.

 Tel: 1-631-559-9269 1-516-512-3133

 Email: [info@creative-biomart.com](mailto:info@creative-biomart.com)  Fax: 1-631-938-8127

 45-1 Ramsey Road, Shirley, NY 11967, USA

**Shipping**

They are shipped out with dry ice/blue ice unless customers require otherwise.

**GENE INFORMATION**
**Gene Name**

[ATR ataxia telangiectasia and Rad3 related \[ Homo sapiens \(human\) \]](#)

**Official Symbol**

[ATR](#)

**Synonyms**

ATR; ataxia telangiectasia and Rad3 related; serine/threonine-protein kinase ATR; FRP1; MEC1; mitosis entry checkpoint 1; homolog (*S. cerevisiae*); SCKL; SCKL1; protein kinase ATR; Rad3 related protein; FRAP-related protein 1; FRAP-related protein-1; MEC1, mitosis entry checkpoint 1, homolog; ataxia telangiectasia and Rad3-related protein; FCTCS;

**Gene ID**

[545](#)

**mRNA Refseq**

[NM\\_001184](#)

**Protein Refseq**

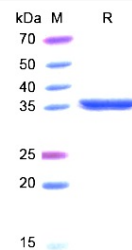
[NP\\_001175](#)

**MIM**

[601215](#)

**UniProt ID**

[Q13535](#)

**SDS-PAGE**


 Tel: 1-631-559-9269 1-516-512-3133

 Email: [info@creative-biomart.com](mailto:info@creative-biomart.com)  Fax: 1-631-938-8127

 45-1 Ramsey Road, Shirley, NY 11967, USA