

Recombinant Full Length Human ATRIP Protein, C-Flag-tagged

Cat. No. ATRIP-1335HFL **Lot. No.** (See product label)

SPECIFICATION

Product Overview	Recombinant Full Length Human ATRIP Protein, fused to Flag-tag at C-terminus, was expressed in Mammalian cells.
Species	Human
Source	Mammalian Cells
Description	This gene encodes an essential component of the DNA damage checkpoint. The encoded protein binds to single-stranded DNA coated with replication protein A. The protein also interacts with the ataxia telangiectasia and Rad3 related protein kinase, resulting in its accumulation at intranuclear foci induced by DNA damage. Multiple transcript variants encoding different isoforms have been found for this gene.
Form	25 mM Tris HCl, pH 7.3, 100 mM glycine, 10% glycerol.
Molecular Mass	85.7 kDa
AA Sequence	MAGTSAPGSKRRSEPPAPRPGPPP GTGHPPSKRARGFSAAAAPDPDDPFGAHGD FTADDLEELDTLASQA LSQCPAAARDVSSDHKVRLLDGM SKNPSGKNRETVP IKD NFELEVLQAQYKELKEKMKVMEEVLIKNG EIKILRDSLHQTESVLEEQRSSHFLLE QEK TQALSDKEKEFSK LQSLQSE LQFKDAEMNELRTKLQ TSE RANKLAAPSVSHV SPRKNPSVVIKPEACSPQFGKTSFPTKESFSANMSLPHPCQTESGYKPLVGREDSK P HSLRGDSIKQEEAQKSFVDSWRQRSNTQGSILINLLLKQPLIPGSSLSLCHLLSSSS ESPAGTPLQPPGF GSTLAGMSGLRTTGSYDGSFSL SALREAQNLAFTGLNLVARNE CSR DGDPAEGRRRAFPLCQLPGAVHFL PLVQFFIGLHCQALQDLAAAKRSGAPGD

 Tel: 1-631-559-9269 1-516-512-3133

 Email: info@creative-biomart.com  Fax: 1-631-938-8127

 45-1 Ramsey Road, Shirley, NY 11967, USA

SPTHSSCVSSGVETNPEDSVCILEGFSVTALSILQHLVCHSG AVVSLLLSGVGADSA
 AGEGNRSLVHRLSDGDMTSALRGVADDQGQHPLLKMLLHLLAFSSAATGHLQASV
 LTQCLKVLVKLAENTSCDFLPRFQCQVQVLPKCLSPETPLPSVLLAVELLSLLADHDQ
 LAPQLCSHSEGC LLLLLYMYITSRPDRVALETQWLQLEQEVVWLLAKLGVQSPLPP
 VTGSNCQCNEVVREALTVMLHRQWLT VRRAGGPPRTDQQRRTVRCLRDTVLLLH
 GLSQKDKLFMMHCVEVLHQFDQVMPGVSMIRGLPDVTDCEE
 AALDDLCAAETDVEDPEVECGTRTRPLEQKLISEEDLAANDILDYKDDDDKV

Purity > 80% as determined by SDS-PAGE and Coomassie blue staining.

Stability Stable for 12 months from the date of receipt of the product under proper storage and handling conditions. Avoid repeated freeze-thaw cycles.

Storage Store at -80 centigrade.

Concentration >50 ug/mL as determined by microplate BCA method.

Preparation Recombinant protein was captured through anti-DDK affinity column followed by conventional chromatography steps.

Full Length Full L.

GENE INFORMATION

Gene Name [ATRIP ATR interacting protein \[Homo sapiens \(human\) \]](#)

Official Symbol [ATRIP](#)

Synonyms DKFZp762J2115; FLJ12343; MGC20625; MGC21482; MGC26740

Gene ID [84126](#)

 Tel: 1-631-559-9269 1-516-512-3133

 Email: info@creative-biomart.com  Fax: 1-631-938-8127

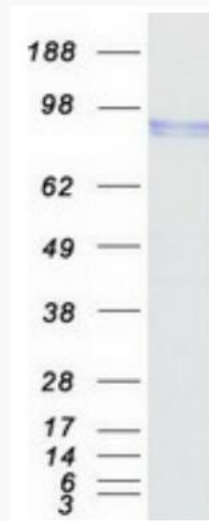
 45-1 Ramsey Road, Shirley, NY 11967, USA

mRNA Refseq [NM_130384.3](#)

Protein Refseq [NP_569055.1](#)

MIM [606605](#)

UniProt ID [Q8WXE1](#)



Coomassie blue staining of purified ATRIP protein.

 Tel: 1-631-559-9269 1-516-512-3133

 Email: info@creative-biomart.com  Fax: 1-631-938-8127

 45-1 Ramsey Road, Shirley, NY 11967, USA