

# Recombinant Human ATRNL1 Protein, Myc/DDK-tagged, C13 and N15-labeled

**Cat. No.** ATRNL1-2107H    **Lot. No.** (See product label)

## SPECIFICATION

<b>Product Overview</b>	ATRNL1 MS Standard C13 and N15-labeled recombinant protein (NP_997186) with a C-terminal MYC/DDK tag, was expressed in HEK293 cells.
<b>Species</b>	Human
<b>Source</b>	HEK293
<b>Description</b>	May play a role in melanocortin signaling pathways that regulate energy homeostasis.
<b>Molecular Mass</b>	152.5 kDa
<b>AA Sequence</b>	<p>METGGRARTGTPQPAAPGVWRARPAGGGGGGASSWLLDGNWLLCYGFLYLALY  AQVSQSKPCERTGSCFSGRCVNSTCLCDPGWVGDCQCQHCQGRFKLTEPSGYLTD  GPINYKYKTKCTWLIIEGYPNAVLRLRFNHFATECSWDHMYVYDGDSDIYAPLIAVLSGL  IVPEIRGNETVPEVVTTSGYALLHFFSDAAYNLTGFNIFYNSINCPNNCSGHGKCTTS  VSVPSQVYCECDKYWKGEACDIPYCKANCGSPDHGYCDLTGEKLCVCNDSWQGP  DCSLNVPSTESYWILPNVKPFSPSVGRASHKAVLHGKFMWVIGGYTFNYSSFQMV  NYNLESSIWNVGTSPRGPLQRYGHSLALYQENIFMYGGRIETNDGNVTDELWVFNH  SQSWSTKTPTVLGHGQQYAVEGHSAHIMELDSRDVVMIIIFGYSAIYGYTSSIQEYHI  SSNTWLVPETKGAIVQGGYGHTSVYDEITKSIYVHGGYKALPGNKYGLVDDLYKYE  V  NTKTWTILKESGFARYLHSAVLINGAMLIFGGNTHNDTSLSNGAKCFSADFLAYDIAC  DEWKILPKPNLHRDVRNFRGHSAVVINGSMYIFGGFSSVLLNDILVYKPPNCKAFRDE  ELCKNAGPGIKCVWNKNHCESWESGNTNNILRAKCPPKTAASDDRCYRYADCASC</p>

 Tel: 1-631-559-9269    1-516-512-3133

 Email: [info@creative-biomart.com](mailto:info@creative-biomart.com)     Fax: 1-631-938-8127

 45-1 Ramsey Road, Shirley, NY 11967, USA

TANTNGCQWCDDKKCISANSNCSMSVKNYTKCHVRNEQICNKLTSCKSCSLNLNC  
 QWDQRQQECQALPAHLCEGEGWESHIGDACLRNVSSRENYDNAKLYCYNLSGNLASL  
 TTSKEVEFVLDEIQKYTQQKVSPWVGLRKINISYWGWEDEMSPFTNTTLQWLPGEPN  
 DSGFCAYLERA AVAGLKANPCTSMANGLVCEKPVVSPNQNARPCCKPCSLRTSCS  
 NCTSNGMECMWCSSTKRCVDSNAYIISFPYGGCLEWQTATCSPQNC SGLRTCGQC  
 LEQPGCGWCNDPSNTGRGHCIEGSSRGPMLIGMHSEMVLDTNLCPKEKNYEW  
 SFIQCPACQCNGHSTCINNNVCEQCKNLTTGKQCQDCMPGYYGDPTNGGQCTACT  
 CSGHANICHLHTGKCFCTTKGIKGDQCQLCDSENRYVGNPLRGTCYYSLLIDYQFTF  
 SLLQEDDRHHTAINFIANPEQSNKNL DISINASNNFNLNITWSVGSTAGTISGEETSIV  
 SKNNIKEYRDSFSYEFNFRSNPNITFYVYVSNF SWPIKIQIAFSQHNTIMDLVQFFVT  
 FFSCFLSLLLVA AVVWKIKQTCWASRRREQLLRERQQMASRPFASVDVALEVGAEQ  
 TEFLRGPLEGAPKPIAIEPCAGNRAAVLTVFLCLPRGSSGAPPPGQSGLAIASALIDIS  
 QKASDSKDKTSGVRNRKHLSTRQGTCVTRTRPLEQKLISEEDLAANDILDYKDDD  
 DKV

**Purity** > 80% as determined by SDS-PAGE and Coomassie blue staining

**Stability** Stable for 3 months from receipt of products under proper storage and handling conditions.

**Storage** Store at -80 centigrade. Avoid repeated freeze-thaw cycles.

**Concentration** 50 µg/mL as determined by BCA

**Storage Buffer** 100 mM glycine, 25 mM Tris-HCl, pH 7.3.

## GENE INFORMATION

**Gene Name** *ATRNL1* attractin-like 1 [ Homo sapiens (human) ]

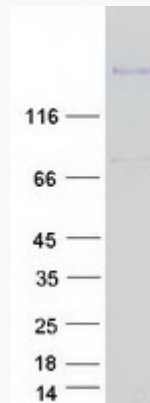
**Official Symbol** *ATRNL1*

 Tel: 1-631-559-9269 1-516-512-3133

 Email: [info@creative-biomart.com](mailto:info@creative-biomart.com)  Fax: 1-631-938-8127

 45-1 Ramsey Road, Shirley, NY 11967, USA

<b>Synonyms</b>	ATRNL1; attractin-like 1; ALP; bA338L11.1; bA454H24.1; attractin-like protein 1
<b>Gene ID</b>	<a href="#">26033</a>
<b>mRNA Refseq</b>	<a href="#">NM_207303</a>
<b>Protein Refseq</b>	<a href="#">NP_997186</a>
<b>MIM</b>	<a href="#">612869</a>
<b>UniProt ID</b>	<a href="#">Q5VV63</a>

**SDS-PAGE**

 Tel: 1-631-559-9269 1-516-512-3133

 Email: [info@creative-biomart.com](mailto:info@creative-biomart.com)  Fax: 1-631-938-8127

 45-1 Ramsey Road, Shirley, NY 11967, USA