

## Recombinant Human ATXN10 protein, GST-tagged

Cat. No. ATXN10-1030H Lot. No. (See product label)

### SPECIFICATION

<b>Product Overview</b>	Human ATXN10 partial ORF ( NP_037368, 1 a.a. - 109 a.a.) recombinant protein with GST-tag at N-terminal.
<b>Species</b>	Human
<b>Source</b>	Wheat Germ
<b>Description</b>	This gene encodes a protein that may function in neuron survival, neuron differentiation, and neuritogenesis. These roles may be carried out via activation of the mitogen-activated protein kinase cascade. Expansion of an ATTCT repeat from 9-32 copies to 800-4500 copies in an intronic region of this locus has been associated with spinocerebellar ataxia, type 10. Alternatively spliced transcript variants have been described.[provided by RefSeq, Jul 2016]
<b>Molecular Mass</b>	37.73 kDa
<b>AA Sequence</b>	MAAPRPPPARLSGVMVPAPIQDLEALRALTALFKEQRNRETAPRTIFQRVLDILKKSS HAVELACRDPSQVENLASSLQLITECFRCLRNACIECSVNQNSIRNLDTIG
<b>Applications</b>	Enzyme-linked Immunoabsorbent Assay; Western Blot (Recombinant protein); Antibody Production; Protein Array
<b>Notes</b>	Best use within three months from the date of receipt of this protein.
<b>Storage</b>	Store at -80 centigrade. Aliquot to avoid repeated freezing and thawing.

 Tel: 1-631-559-9269 1-516-512-3133

 Email: [info@creative-biomart.com](mailto:info@creative-biomart.com)  Fax: 1-631-938-8127

 45-1 Ramsey Road, Shirley, NY 11967, USA

**Storage Buffer** 50 mM Tris-HCl, 10 mM reduced Glutathione, pH=8.0 in the elution buffer.

## GENE INFORMATION

**Gene Name** ATXN10 ataxin 10 [ Homo sapiens ]

**Official Symbol** ATXN10

**Synonyms** ATXN10; ataxin 10; SCA10, spinocerebellar ataxia 10; ataxin-10; E46L; FLJ37990; brain protein E46 homolog; spinocerebellar ataxia type 10 protein; SCA10; HUMEEP;

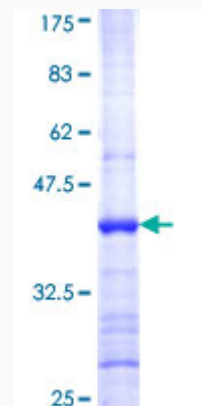
**Gene ID** 25814

**mRNA Refseq** NM\_001167621

**Protein Refseq** NP\_001161093

**MIM** 611150

**UniProt ID** Q9UBB4



 Tel: 1-631-559-9269 1-516-512-3133

 Email: [info@creative-biomart.com](mailto:info@creative-biomart.com)  Fax: 1-631-938-8127

 45-1 Ramsey Road, Shirley, NY 11967, USA



12.5% SDS-PAGE Stained with Coomassie Blue.

 Tel: 1-631-559-9269 1-516-512-3133

 Email: [info@creative-biomart.com](mailto:info@creative-biomart.com)  Fax: 1-631-938-8127

 45-1 Ramsey Road, Shirley, NY 11967, USA