

Recombinant Human ATXN2L Protein, Myc/DDK-tagged, C13 and N15-labeled

Cat. No. ATXN2L-819H Lot. No. (See product label)

SPECIFICATION

Product Overview

ATXN2L MS Standard C13 and N15-labeled recombinant protein (NP_680780) with a C-terminal MYC/DDK tag, was expressed in HEK293 cells.

Species

Human

Source

HEK293

Description

This gene encodes an ataxin type 2 related protein of unknown function. This protein is a member of the spinocerebellar ataxia (SCAs) family, which is associated with a complex group of neurodegenerative disorders. Several alternatively spliced transcripts encoding different isoforms have been found for this gene.

Molecular Mass

115.4 kDa

AA Sequence

MLKPQPLQQPSQPQQPPPTQQAVARRPPGGTSPPNGGLPGPLATSAAPPGPPAAA
 SPCLGPVAAAGSGLRRGAEGILAPQPPPPQQHQERPGAAAIQSARGQSTGKGGPPQ
 SPVFEGVYNNRMLHFLTAVVGSTCDVKVKNGTTYEGIFKTLSSKFELAVDAVHRKA
 SEPAGGPRREDIVDTMVFKPSDVMLVHFRNVDFNYATKDKFTDSAIAMNSKVNGEH
 KEKVLQRWEGGDSNSDDYDLESDMSGWDPNEMFKFNEENYGVKTTYDSSLSSY
 TVPLEKDNSEEFQRRELRAAQLAREIESSPQYRLRIAMENDDGRTEEEKHSAVQRQ
 GSGRESPSLASREGKYIPLPQRVREGPRGGVRCSSSRGGRPGLSSLPPRGP HHLD
 NSSPGPGSEARGINGGSPSRMSPKAQRPLRGAKTLSSPSNRPSGETSVPPPPAVGR
 MYPPRSPKSAAPAPISASCPEPPIGSAVPTSSASIPVTSSVSDPGVGSISPASPKISLA

 Tel: 1-631-559-9269 1-516-512-3133

 Email: info@creative-biomart.com  Fax: 1-631-938-8127

 45-1 Ramsey Road, Shirley, NY 11967, USA

PTDVKELSTKEPGRITLEPQELARIAGKVPGLQNEQKRFQLEELRKFGAQFKLQPS
 PENSLDPFPPRILKEEPKGKEKEVDGLLTSEPMGSPVSSKTESVSDKEDKPPLAPSG
 GTEGPEQPPPPCPSQTGSPVGLIKGEDKDEGPVAEQVKKSTLNPNAKEFNPTKPL
 LSVNKSTSTPTSPGPRTHSTPSIPVLTAGQSGLYSPQYISYIPQIHMGPVAVQAPQMYP
 YPVSNSVPGQQGKYRGAKGSLPPQRSDQHQPASAPPMMQAAAAAGPPLVAATPY
 SSIYPYNPQQFPGQPAMMQMAHYPSPQVFAPMLQSNPRMLTSGSHPQAISSST
 PQYPSAEQPTPQALYATVHQSYPHHATQLHAHQPPATTPTGSQPQSQHAAPSPV
 QHQAGQAPHLGSGQPQQNLYHPGALTGTPPSLPPGSAQSPQSSFPQAAVYAIH
 HQQLPHGFTNMAHVTAHVQTGITAAPPPHPGAPHPVQVMLLHPPQSHGGPPQGA
 VPQSGVPALSASTPSPYPYIGHPQGEQPGQAPGFPGGADDRILCRVGRSHSRRRQ
 GLAPGSVLCFPPSSLSCDPAAPLPTASPALSDPDCLLTTTRTRPLEQKLISEEDLAAND
 ILDYKDDDDKV

Purity > 80% as determined by SDS-PAGE and Coomassie blue staining

Stability Stable for 3 months from receipt of products under proper storage and handling conditions.

Storage Store at -80 centigrade. Avoid repeated freeze-thaw cycles.

Concentration 50 µg/mL as determined by BCA

Storage Buffer 100 mM glycine, 25 mM Tris-HCl, pH 7.3.

GENE INFORMATION

Gene Name ATXN2L ataxin 2-like [Homo sapiens (human)]

Official Symbol ATXN2L

Synonyms ATXN2L; ataxin 2-like; ataxin-2-like protein; A2D; A2lp; ataxin-2 domain protein;

 Tel: 1-631-559-9269 1-516-512-3133

 Email: info@creative-biomart.com  Fax: 1-631-938-8127

 45-1 Ramsey Road, Shirley, NY 11967, USA

ataxin 2 related protein; ataxin-2-related protein; A2LG; A2LP; A2RP;

Gene ID 11273

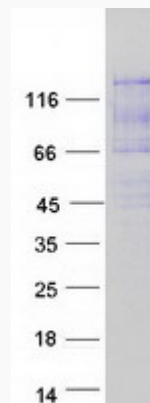
mRNA Refseq NM_148414

Protein Refseq NP_680780

MIM 607931

UniProt ID Q8WWM7

SDS-PAGE



 Tel: 1-631-559-9269 1-516-512-3133

 Email: info@creative-biomart.com  Fax: 1-631-938-8127

 45-1 Ramsey Road, Shirley, NY 11967, USA