

## Recombinant Human ATXN3 protein(11-290 aa), C-His-tagged

Cat. No. ATXN3-2786H Lot. No. (See product label)

### SPECIFICATION

<b>Product Overview</b>	Recombinant Human ATXN3 protein(P54252)(11-290 aa), fused with C-terminal His tag, was expressed in E. coli.
<b>Species</b>	Human
<b>Source</b>	E.coli
<b>ProteinLength</b>	11-290 aa
<b>Form</b>	0.15 M Phosphate buffered saline
<b>Molecular Mass</b>	34.5 kDa
<b>Storage</b>	Shipped on dry ice. Avoid repeated freeze-thaw cycles. Upon receipt, 2 days when stored at 2 to 8 °C after thawing. Up to 12 months when aliquoted and stored at -20 to -80°C.
<b>Reconstitution</b>	It is recommended that sterile water be added to the vial to prepare a stock solution of 0.2 ug/ul. Centrifuge the vial at 4°C before opening to recover the entire contents.
<b>AA Sequence</b>	GSLCAQHCLNLLQGEYFSPVELSSIAHQLDEEERMMAEGGVTSedyRTFLQQPS GNMDDSGFFSIQVISNALKVWGLELILFNSPEYQRLRIDPINERSFCINYKEHWFTVR KLGKQWFNLNSLLTGPELISDTYLALFLAQLQQEGYSIFVVKGDLPDCEADQLQMIR VQQMHRPKLIGEELAQLKEQRVHKTDLERVLEANDGSGMLDEDEEDLQRALALSRQ EIDMEDEEADLRRAIQLSMQGSSRNISQDMTQTSGTNLTSEELRKRREAYFE

 Tel: 1-631-559-9269 1-516-512-3133

 Email: [info@creative-biomart.com](mailto:info@creative-biomart.com)  Fax: 1-631-938-8127

 45-1 Ramsey Road, Shirley, NY 11967, USA

## GENE INFORMATION

**Gene Name** [ATXN3 ataxin 3 \[ Homo sapiens \]](#)

**Official Symbol** [ATXN3](#)

**Synonyms** [ATXN3](#); [ataxin 3](#); [Machado Joseph disease \(spinocerebellar ataxia 3, olivopontocerebellar ataxia 3, autosomal dominant, ataxin 3\)](#) , [MJD](#), [SCA3](#); [ataxin-3](#); [ATX3](#); [JOS](#); [josephin](#); [ataxin 3 variant h](#); [ataxin 3 variant m](#); [ataxin 3 variant ref](#); [olivopontocerebellar ataxia 3](#); [Machado-Joseph disease protein 1](#); [spinocerebellar ataxia type 3 protein](#); [Machado-Joseph disease \(spinocerebellar ataxia 3, olivopontocerebellar ataxia 3, autosomal dominant, ataxin 3\)](#); [AT3](#); [MJD](#); [MJD1](#); [SCA3](#);

**Gene ID** [4287](#)

**mRNA Refseq** [NM\\_001127696](#)

**Protein Refseq** [NP\\_001121168](#)

**MIM** [607047](#)

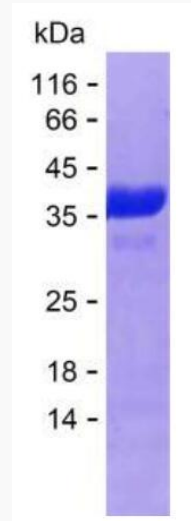
**UniProt ID** [P54252](#)

 Tel: 1-631-559-9269 1-516-512-3133

 Email: [info@creative-biomart.com](mailto:info@creative-biomart.com)  Fax: 1-631-938-8127

 45-1 Ramsey Road, Shirley, NY 11967, USA

**SDS-PAGE**



 Tel: 1-631-559-9269 1-516-512-3133

 Email: [info@creative-biomart.com](mailto:info@creative-biomart.com)  Fax: 1-631-938-8127

 45-1 Ramsey Road, Shirley, NY 11967, USA