

Recombinant Human ATXN7L3 protein, His-tagged

Cat. No. ATXN7L3-6433H Lot. No. (See product label)

SPECIFICATION

Product Overview	Recombinant Human ATXN7L3 protein(Q14CW9)(1-347aa), fused with C-terminal His tag, was expressed in E.coli.
Species	Human
Source	E.coli
ProteinLength	1-347aa
Form	If the delivery form is liquid, the default storage buffer is Tris/PBS-based buffer, 5%-50% glycerol. If the delivery form is lyophilized powder, the buffer before lyophilization is Tris/PBS-based buffer, 6% Trehalose, pH 8.0.
Molecular Mass	45.6 kDa
Purity	Greater than 85% as determined by SDS-PAGE.
Storage	Store at -20°C/-80°C upon receipt, aliquoting is necessary for mutiple use. Avoid repeated freeze-thaw cycles.
Reconstitution	We recommend that this vial be briefly centrifuged prior to opening to bring the contents to the bottom. Please reconstitute protein in deionized sterile water to a concentration of 0.1-1.0 mg/mL. We recommend to add 5-50% of glycerol (final concentration) and aliquot for long-term storage at -20°C/-80°C.

 Tel: 1-631-559-9269 1-516-512-3133

 Email: info@creative-biomart.com  Fax: 1-631-938-8127

 45-1 Ramsey Road, Shirley, NY 11967, USA

AA Sequence

MKMEEMSLSGLDNSKLEAIAQEIYADLVEDSCLGFCFEVHRAVKCGYFFLDDTDPDS
MKDFEIVDQPGLDIFGQVFNQWKSKECVPCNCSRSIAASRFAPHLEKCLGMGRNSS
RIANRRIANSNNMKNKSESDQEDNDDINDNDWSYGSEKKAKKRKSDKNPNSPRRSK
SLKHKNGELSNSDPFKYNNSTGISYETLGPPEELRSLTTQCGVISEHTKKMCTRSLR
CPQHTDEQRRTVRIYFLGPSAVLPEVESSLDNSFDMTDSQALISRLQWDGSSDLS
PSDSGSSKTSENQGWGLGTNSSESRTKTKKKSHLSLVGTASGLGSNKKKKPKPPA
PPTPSIYDDIN

GENE INFORMATION

Gene Name [ATXN7L3 ataxin 7-like 3 \[Homo sapiens \]](#)

Official Symbol [ATXN7L3](#)

Synonyms ATXN7L3; ataxin 7-like 3; ataxin-7-like protein 3; DKFZp761G2113; SAGA-associated factor 11 homolog;

Gene ID [56970](#)

mRNA Refseq [NM_001098833](#)

Protein Refseq [NP_001092303](#)

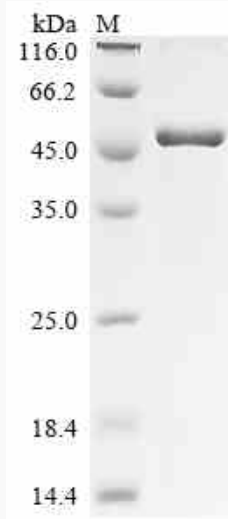
UniProt ID [Q14CW9](#)

 Tel: 1-631-559-9269 1-516-512-3133

 Email: info@creative-biomart.com  Fax: 1-631-938-8127

 45-1 Ramsey Road, Shirley, NY 11967, USA

SDS-PAGE



 Tel: 1-631-559-9269 1-516-512-3133

 Email: info@creative-biomart.com  Fax: 1-631-938-8127

 45-1 Ramsey Road, Shirley, NY 11967, USA