

## Recombinant Human AXIN1 Protein, GST-Tagged

**Cat. No.** AXIN1-02H    **Lot. No.** (See product label)

### SPECIFICATION

<b>Product Overview</b>	Recombinant Human AXIN1 Protein, GST-Tagged was expressed in sf9 cell.
<b>Species</b>	Human
<b>Source</b>	Sf9 Cells
<b>Description</b>	<p>This gene encodes a cytoplasmic protein which contains a regulation of G-protein signaling (RGS) domain and a dishevelled and axin (DIX) domain. The encoded protein interacts with adenomatosis polyposis coli, catenin beta-1, glycogen synthase kinase 3 beta, protein phosphate 2, and itself. This protein functions as a negative regulator of the wingless-type MMTV integration site family, member 1 (WNT) signaling pathway and can induce apoptosis. The crystal structure of a portion of this protein, alone and in a complex with other proteins, has been resolved. Mutations in this gene have been associated with hepatocellular carcinoma, hepatoblastomas, ovarian endometriod adenocarcinomas, and medullablastomas. Alternative splicing results in multiple transcript variants.</p>
<b>Molecular Mass</b>	~135 kDa
<b>Purity</b>	≥75%
<b>Usage</b>	Research Use Only
<b>Storage</b>	Store product at -70oC. For optimal storage, aliquot target into smaller quantities after centrifugation and store at recommended temperature. For most favorable

 Tel: 1-631-559-9269    1-516-512-3133

 Email: [info@creative-biomart.com](mailto:info@creative-biomart.com)     Fax: 1-631-938-8127

 45-1 Ramsey Road, Shirley, NY 11967, USA

performance, avoid repeated handling and multiple freeze/thaw cycles.

**Concentration** 0.05 g/μ

**Storage Buffer** Recombinant protein stored in 50mM Tris-HCl, pH 7.5, 50mM NaCl, 10mM glutathione, 0.1mM EDTA, 0.25mM DTT, 0.1mM PMSF, 25% glycerol.

**Shipping** Shipped with ice pack.

## GENE INFORMATION

**Gene Name** [AXIN1 axin 1 \[ Homo sapiens \(human\) \]](#)

**Official Symbol** [AXIN1](#)

**Synonyms** AXIN; PPP1R49

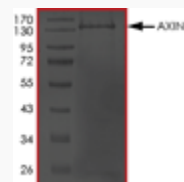
**Gene ID** [8312](#)

**mRNA Refseq** [NM\\_003502.4](#)

**Protein Refseq** [NP\\_003493.1](#)

**MIM** [603816](#)

**UniProt ID** [O15169](#)



 Tel: 1-631-559-9269 1-516-512-3133

 Email: [info@creative-biomart.com](mailto:info@creative-biomart.com)  Fax: 1-631-938-8127

 45-1 Ramsey Road, Shirley, NY 11967, USA



Sample Purity Data. For specific information on a given lot, see related technical data sheet.

 Tel: 1-631-559-9269 1-516-512-3133

 Email: [info@creative-biomart.com](mailto:info@creative-biomart.com)  Fax: 1-631-938-8127

 45-1 Ramsey Road, Shirley, NY 11967, USA