

Recombinant Human AXIN1 protein, GST-tagged

Cat. No. AXIN1-1047H **Lot. No.** (See product label)

SPECIFICATION

Product Overview	Human AXIN1 partial ORF (NP_003493, 643 a.a. - 740 a.a.) recombinant protein with GST-tag at N-terminal.
Species	Human
Source	Wheat Germ
Description	This gene encodes a cytoplasmic protein which contains a regulation of G-protein signaling (RGS) domain and a dishevelled and axin (DIX) domain. The encoded protein interacts with adenomatosis polyposis coli, catenin beta-1, glycogen synthase kinase 3 beta, protein phosphate 2, and itself. This protein functions as a negative regulator of the wingless-type MMTV integration site family, member 1 (WNT) signaling pathway and can induce apoptosis. The crystal structure of a portion of this protein, alone and in a complex with other proteins, has been resolved. Mutations in this gene have been associated with hepatocellular carcinoma, hepatoblastomas, ovarian endometriod adenocarcinomas, and medullablastomas. Alternative splicing results in multiple transcript variants. [provided by RefSeq, Jan 2016]
Molecular Mass	36.52 kDa
AA Sequence	ISRHRRTGHGSSGTRKQPHEHSRPLSLEHPWAGPQLRTSVQPSHLFIQDPTMPPH PAPNPLTQLEEARRRLEEEEEKRASRAPSKQRYVQEVMMRRGRA
Applications	Enzyme-linked Immunoabsorbent Assay; Western Blot (Recombinant protein); Antibody Production; Protein Array

 Tel: 1-631-559-9269 1-516-512-3133

 Email: info@creative-biomart.com  Fax: 1-631-938-8127

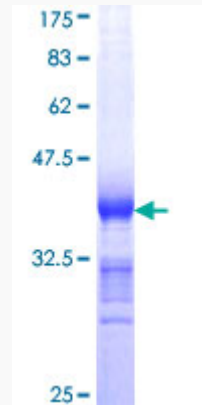
 45-1 Ramsey Road, Shirley, NY 11967, USA

Notes	Best use within three months from the date of receipt of this protein.
Storage	Store at -80 centigrade. Aliquot to avoid repeated freezing and thawing.
Storage Buffer	50 mM Tris-HCl, 10 mM reduced Glutathione, pH=8.0 in the elution buffer.
GENE INFORMATION	
Gene Name	AXIN1 axin 1 [Homo sapiens]
Official Symbol	AXIN1
Synonyms	AXIN1; axin 1; axin-1; PPP1R49; protein phosphatase 1; regulatory subunit 49; axis inhibitor 1; fused, mouse, homolog of; axis inhibition protein 1; protein phosphatase 1, regulatory subunit 49; AXIN; MGC52315;
Gene ID	8312
mRNA Refseq	NM_003502
Protein Refseq	NP_003493
MIM	603816
UniProt ID	O15169

 Tel: 1-631-559-9269 1-516-512-3133

 Email: info@creative-biomart.com  Fax: 1-631-938-8127

 45-1 Ramsey Road, Shirley, NY 11967, USA



12.5% SDS-PAGE Stained with Coomassie Blue.

 Tel: 1-631-559-9269 1-516-512-3133

 Email: info@creative-biomart.com  Fax: 1-631-938-8127

 45-1 Ramsey Road, Shirley, NY 11967, USA