

Recombinant Human AXL Protein, DYKDDDDK-tagged

Cat. No. AXL-087H **Lot. No.** (See product label)

SPECIFICATION

Product Overview	Recombinant protein from the full-length sequence of homo sapiens AXL receptor tyrosine kinase (AXL), transcript variant 1 (NM_021913), with a DYKDDDDK tag was expressed in human cells.
Species	Human
Source	Human Cells
Description	The protein encoded by this gene is a member of the Tyro3-Axl-Mer (TAM) receptor tyrosine kinase subfamily. The encoded protein possesses an extracellular domain which is composed of two immunoglobulin-like motifs at the N-terminal, followed by two fibronectin type-III motifs. It transduces signals from the extracellular matrix into the cytoplasm by binding to the vitamin K-dependent protein growth arrest-specific 6 (Gas6). This gene may be involved in several cellular functions including growth, migration, aggregation and anti-inflammation in multiple cell types. Alternative splicing results in multiple transcript variants of this gene.
Molecular Mass	98.2 kDa
Endotoxin	Endotoxin level is < 0.1 ng/μg of protein (< 1 EU /μg)
Purity	>90% by SDS-PAGE gel and Coomassie Blue staining
Applications	Antigens, Western, ELISA and other in vitro binding or in vivo functional assays, and protein-protein interaction studies; For research & development use only!

 Tel: 1-631-559-9269 1-516-512-3133

 Email: info@creative-biomart.com  Fax: 1-631-938-8127

 45-1 Ramsey Road, Shirley, NY 11967, USA

Storage Buffer Purified protein formulated in a sterile solution of TBS buffer, pH7.4, without any preservatives

GENE INFORMATION

Gene Name AXL AXL receptor tyrosine kinase [Homo sapiens (human)]

Official Symbol AXL

Synonyms AXL; AXL receptor tyrosine kinase; ARK; UFO; JTK11; Tyro7; tyrosine-protein kinase receptor UFO; AXL oncogene; AXL transforming sequence/gene; EC 2.7.10.1

Gene ID 558

mRNA Refseq NM_021913

Protein Refseq NP_068713

MIM 109135

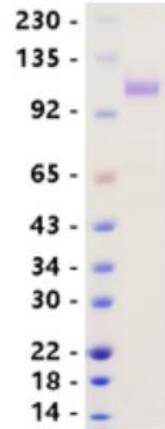
UniProt ID P30530

 Tel: 1-631-559-9269 1-516-512-3133

 Email: info@creative-biomart.com  Fax: 1-631-938-8127

 45-1 Ramsey Road, Shirley, NY 11967, USA

SDS-PAGE



 Tel: 1-631-559-9269 1-516-512-3133

 Email: info@creative-biomart.com  Fax: 1-631-938-8127

 45-1 Ramsey Road, Shirley, NY 11967, USA