

## Recombinant Human AXL protein, GST-tagged

**Cat. No.** AXL-1049H    **Lot. No.** (See product label)

### SPECIFICATION

<b>Product Overview</b>	Human AXL full-length ORF ( AAH32229.1, 1 a.a. - 894 a.a.) recombinant protein with GST-tag at N-terminal.
<b>Species</b>	Human
<b>Source</b>	Wheat Germ
<b>Description</b>	The protein encoded by this gene is a member of the Tyro3-Axl-Mer (TAM) receptor tyrosine kinase subfamily. The encoded protein possesses an extracellular domain which is composed of two immunoglobulin-like motifs at the N-terminal, followed by two fibronectin type-III motifs. It transduces signals from the extracellular matrix into the cytoplasm by binding to the vitamin K-dependent protein growth arrest-specific 6 (Gas6). This gene may be involved in several cellular functions including growth, migration, aggregation and anti-inflammation in multiple cell types. Alternative splicing results in multiple transcript variants of this gene. [provided by RefSeq, Jul 2013]
<b>Molecular Mass</b>	124.8 kDa
<b>AA Sequence</b>	MAWRCPRMGRVPLAWCLALCGWACMAPRGTQAEESPFVGNPGNITGARGLTGTL RCQLQVQGEPPEVHWLRDQGILELADSTQTQVPLGEDEQDDWIVVSQLRITSLQLS DTGQYQCLVFLGHQTFVSQPGYVGLLEGLPYFLEEPEDRTVAANTPFNLSCQAQGGPP EPVDLLWLQDAVPLATAPGHGPQRSLHVPGLNKTSSFCEAHNAKGVTTSRTATITV LPQQPRNLHLVSRQPTELEVAWTPGLSGIYPLTHCTLQAVLSDDGMGIQAGEPDPP EEPLTSQASVPPHQLRLGSLHPHTPYHIRVACTSSQGPSSWTHWLPVETPEGVPLG

 Tel: 1-631-559-9269    1-516-512-3133

 Email: [info@creative-biomart.com](mailto:info@creative-biomart.com)     Fax: 1-631-938-8127

 45-1 Ramsey Road, Shirley, NY 11967, USA

PPENISATRNGSQAFVHWQEPRAPLQGTLG YRLAYQQGQDTPEVLMDIGLRQEVTL  
 ELQGDGSVSNLTVCAAYTAAGDGPWSLPVPLEAWRPGQAQPVHQLVKEPSTPAF  
 SWPWWYVLLGAVVAAACVLILALFLVHRRKKETRYGEVFEPTVERGELVVRVVRK  
 SYSRRTTEATLNSLGISEELKEKLRDVMVDRHKVALGKTLGEGEFGAVMEGQLNQD  
 DSILKVAVKTMKIAICTRSELEDFLSEAVCMKEFDHPNVMLRIGVCFQGSERESFPAP  
 VVILPFMKHGDLSFLLYSRLGDQPVYLPTQMLVKFMADIASGMEYLSTKRFIHRDLA  
 ARNCMLNENMSVCVADFGLSKKIYNGDYRQGR IAKMPVKWIAIESLADR VYTSKSD  
 VWSFGVTMWEIATR GQTPYPGVENSEIYDYLRRGNRLKQPADCLDGLYALMSRCW  
 ELNPQDRPSFTELREDLN TLKALPPAQEPDEILYVNMDEGGGYPEPPGAAGGADP  
 PTQPDPKDCSCLTAAEVHPAGRYVLC PSTTPSPAQPADRGSPAAPGQEDGA

**Applications**

Enzyme-linked Immunoabsorbent Assay; Western Blot (Recombinant protein);  
 Antibody Production; Protein Array

**Notes**

Best use within three months from the date of receipt of this protein.

**Storage**

Store at -80 centigrade. Aliquot to avoid repeated freezing and thawing.

**Storage Buffer**

50 mM Tris-HCl, 10 mM reduced Glutathione, pH=8.0 in the elution buffer.

## GENE INFORMATION

**Gene Name**

AXL AXL receptor tyrosine kinase [ Homo sapiens ]

**Official Symbol**

AXL

**Synonyms**

AXL; AXL receptor tyrosine kinase; tyrosine-protein kinase receptor UFO; JTK11;  
 UFO; AXL oncogene; oncogene AXL; AXL transforming sequence/gene;

**Gene ID**

558

 Tel: 1-631-559-9269 1-516-512-3133

 Email: [info@creative-biomart.com](mailto:info@creative-biomart.com)  Fax: 1-631-938-8127

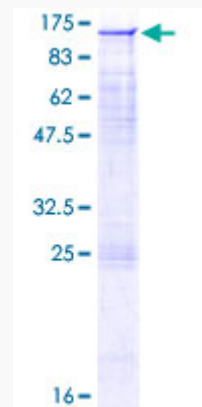
 45-1 Ramsey Road, Shirley, NY 11967, USA

mRNA Refseq NM\_001699

Protein Refseq NP\_001690

MIM 109135

UniProt ID P30530



12.5% SDS-PAGE Stained with Coomassie Blue.

Tel: 1-631-559-9269 1-516-512-3133

Email: [info@creative-biomart.com](mailto:info@creative-biomart.com) Fax: 1-631-938-8127

45-1 Ramsey Road, Shirley, NY 11967, USA