

Recombinant Human AXL Protein(26-451aa(D266N)), hFc-tagged

Cat. No. AXL-2919H **Lot. No.** (See product label)

SPECIFICATION

Product Overview	Recombinant Human AXL Protein(26-451aa(D266N))(P30530), fused with C-terminal hFc tag, was expressed in HEK293.
Species	Human
Source	HEK293
ProteinLength	26-451aa(D266N)
Form	If the delivery form is liquid, the default storage buffer is Tris/PBS-based buffer, 5%-50% glycerol. If the delivery form is lyophilized powder, the buffer before lyophilization is Tris/PBS-based buffer, 6% Trehalose, pH 8.0.
Molecular Mass	75.1 kDa
AA Sequence	<p>APRGTQAEESPFVGNPGNITGARGLTGTLRCQLQVQGEPPEVHWLRDGGQILELADS TQTQVPLGEDEQDDWIVVSQLRITSLQLSDTGQYQCLVFLGHQTFVSQPGYVGLEG LPYFLEEPEDRTVAANTPFNLSCQAQGPPEPVDLLWLQDAVPLATAPGHGPPQRS LHVPGLNKTSSFSCEAHNAKGVTTSRATITVLPQQPRNLHLVSRQPTELEVAWTPGLS GIYPLTHCTLQAVLSNDGMGIQAGEPDPPEEPLTSQASVPPHQLRLGSLHPHTPYHI RVACTSSQGPSSWITHWLPVETPEGVPLGPPENISATRNGSQAFVHWQEPRAPLQG TLLGYRLAYQGQDTPEVLMDIGLRQEVTLELQGDGVSNSLTVCAAYTAAGDGPWS LPVPLEAWRPGQAQPVHQLVKEPSTPAFSWPWW</p>

 Tel: 1-631-559-9269 1-516-512-3133

 Email: info@creative-biomart.com  Fax: 1-631-938-8127

 45-1 Ramsey Road, Shirley, NY 11967, USA

Purity	Greater than 85% as determined by SDS-PAGE.
Storage	Store at -20°C/-80°C upon receipt, aliquoting is necessary for mutiple use. Avoid repeated freeze-thaw cycles.
Reconstitution	It is recommended that sterile water be added to the vial to prepare a stock solution of 0.2 ug/ul. Centrifuge the vial at 4°C before opening to recover the entire contents.

GENE INFORMATION

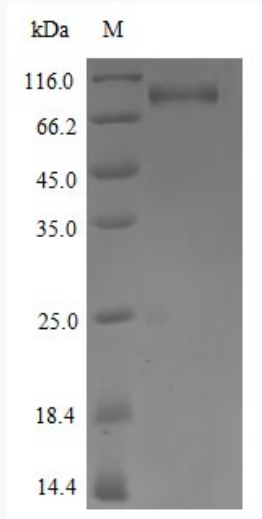
Gene Name	AXL AXL receptor tyrosine kinase [Homo sapiens]
Official Symbol	AXL
Synonyms	AXL; AXL receptor tyrosine kinase; tyrosine-protein kinase receptor UFO; JTK11; UFO; AXL oncogene; oncogene AXL; AXL transforming sequence/gene;
Gene ID	558
mRNA Refseq	NM_001699
Protein Refseq	NP_001690
MIM	109135
UniProt ID	P30530

 Tel: 1-631-559-9269 1-516-512-3133

 Email: info@creative-biomart.com  Fax: 1-631-938-8127

 45-1 Ramsey Road, Shirley, NY 11967, USA

SDS-PAGE



 Tel: 1-631-559-9269 1-516-512-3133

 Email: info@creative-biomart.com  Fax: 1-631-938-8127

 45-1 Ramsey Road, Shirley, NY 11967, USA