

Recombinant Human AZGP1 protein, GST-tagged

Cat. No. AZGP1-1052H Lot. No. (See product label)

SPECIFICATION

Product Overview	Human AZGP1 full-length ORF (AAH33830, 22 a.a. - 298 a.a.) recombinant protein with GST-tag at N-terminal.
Species	Human
Source	Wheat Germ
Description	AZGP1 (Alpha-2-Glycoprotein 1, Zinc-Binding) is a Protein Coding gene. Diseases associated with AZGP1 include Hidrocystoma and Clear Cell Hidradenoma. Among its related pathways are Miscellaneous transport and binding events and Transport of glucose and other sugars, bile salts and organic acids, metal ions and amine compounds. GO annotations related to this gene include antigen binding and peptide antigen binding. An important paralog of this gene is HLA-B.
Molecular Mass	56.21 kDa
AA Sequence	ENQGGRYSLTYIYTGLSKHVEDVPAFQALGSLNDLQFFRYNSKDRKSQPMGLWRQ VEGMEDWKQDSQLQKAREDIFMETLKDIVEYYNDSNGSHVLQGRFGCEIENNRSS GAFWKYYYDYGKDYIEFNKEIPAWVVPFDPAAQITKQKWEAEPVYVQRAKAYLEEECP ATLRKYLKYSKNILDRQDPPSVVVTSHQAPGEKKKCLKLAYDFYPGKIDVHWTRAGE VQPELRGBDLHNGNGTYQSWVVAVPPQDTAPYSCHVQHSSLAQPLVGPWEAS
Applications	Enzyme-linked Immunoabsorbent Assay; Western Blot (Recombinant protein); Antibody Production; Protein Array

 Tel: 1-631-559-9269 1-516-512-3133

 Email: info@creative-biomart.com  Fax: 1-631-938-8127

 45-1 Ramsey Road, Shirley, NY 11967, USA

Notes	Best use within three months from the date of receipt of this protein.
Storage	Store at -80 centigrade. Aliquot to avoid repeated freezing and thawing.
Storage Buffer	50 mM Tris-HCl, 10 mM reduced Glutathione, pH=8.0 in the elution buffer.

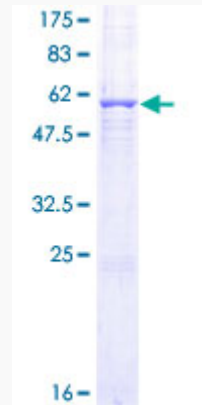
GENE INFORMATION

Gene Name	AZGP1 alpha-2-glycoprotein 1, zinc-binding [Homo sapiens]
Official Symbol	AZGP1
Synonyms	AZGP1; alpha-2-glycoprotein 1, zinc-binding; alpha 2 glycoprotein 1, zinc; zinc-alpha-2-glycoprotein; ZA2G; ZAG; zn-alpha-2-GP; Zn-alpha2-glycoprotein; zn-alpha-2-glycoprotein; Alpha-2-glycoprotein, zinc;
Gene ID	563
mRNA Refseq	NM_001185
Protein Refseq	NP_001176
MIM	194460
UniProt ID	P25311

 Tel: 1-631-559-9269 1-516-512-3133

 Email: info@creative-biomart.com  Fax: 1-631-938-8127

 45-1 Ramsey Road, Shirley, NY 11967, USA



12.5% SDS-PAGE Stained with Coomassie Blue.

 Tel: 1-631-559-9269 1-516-512-3133

 Email: info@creative-biomart.com  Fax: 1-631-938-8127

 45-1 Ramsey Road, Shirley, NY 11967, USA