

Recombinant Human AZI2 protein, GST-tagged

Cat. No. AZI2-1053H Lot. No. (See product label)

SPECIFICATION

Product Overview	Human AZI2 full-length ORF (NP_071906.1, 1 a.a. - 392 a.a.) recombinant protein with GST-tag at N-terminal.
Species	Human
Source	Wheat Germ
Description	AZI2, or NAP1, contributes to the activation of NF κ B (see MIM 164011)-dependent gene expression by activating IKK-related kinases, such as NAK (TBK1; MIM 604834) (Fujita et al., 2003 [PubMed 14560022]).[supplied by OMIM, Mar 2008]
Molecular Mass	71.3 kDa
AA Sequence	MDALVEDDICILNHEKAHKRDTVTPVSIYSGDESVASHFALVTAYEDIKKRLKDSEKE NSLLKKRIRFLEEKLIARFEEETSSVGREQVNKAYHAYREVCIDRDNLKSKLDKMNKD NSESLKVLNEQLQSKEVELLQLRTEVETQQVMRNLNPPSSNWEVEKLSCDLKIHGL EQEELMRKECSDLKIELQKAKQTPYQEDNLKSRDLQKLSISSDNMQHAYWELKR EMSNLHLVTQVQAELLRKLKTSTAIKKACAPVGCSEDLGRDSTKLHLMNFTATYTRH PPLLNGKALCHTTSSPLPGDVKVLSEKAILQSWTDNERSIPNDGTGCFQEHSYGRN SLEDNSWVFPSPPKSSETAFGETKTKTLPLPNLPLHYLDQHNQNCLYKN
Applications	Enzyme-linked Immunoabsorbent Assay; Western Blot (Recombinant protein); Antibody Production; Protein Array
Notes	Best use within three months from the date of receipt of this protein.

 Tel: 1-631-559-9269 1-516-512-3133

 Email: info@creative-biomart.com  Fax: 1-631-938-8127

 45-1 Ramsey Road, Shirley, NY 11967, USA

Storage Store at -80 centigrade. Aliquot to avoid repeated freezing and thawing.

Storage Buffer 50 mM Tris-HCl, 10 mM reduced Glutathione, pH=8.0 in the elution buffer.

GENE INFORMATION

Gene Name [AZI2 5-azacytidine induced 2 \[Homo sapiens \]](#)

Official Symbol [AZI2](#)

Synonyms AZ2; NAP1; TILP

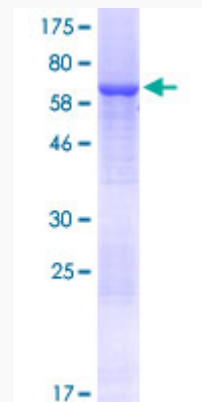
Gene ID [64343](#)

mRNA Refseq [NM_022461.3](#)

Protein Refseq [NP_071906.1](#)

MIM [609916](#)

UniProt ID [Q9H6S1](#)



 Tel: 1-631-559-9269 1-516-512-3133

 Email: info@creative-biomart.com  Fax: 1-631-938-8127

 45-1 Ramsey Road, Shirley, NY 11967, USA



12.5% SDS-PAGE Stained with Coomassie Blue.

 Tel: 1-631-559-9269 1-516-512-3133

 Email: info@creative-biomart.com  Fax: 1-631-938-8127

 45-1 Ramsey Road, Shirley, NY 11967, USA