

## Recombinant Mouse ABL1, His-tagged, Active

Cat. No. Abl1-232M Lot. No. (See product label)

### SPECIFICATION

<b>Product Overview</b>	Recombinant mouse ABL1 (27-end) was expressed by baculovirus in <i>Sf9 insect cell</i> using an N-terminal His tag. MW=135 kDa.
<b>Species</b>	Mouse
<b>Source</b>	Sf9 Cells
<b>Protein Length</b>	27-end a.a.
<b>Description</b>	ABL1 protooncogene encodes a cytoplasmic and nuclear protein tyrosine kinase that has been implicated in processes of cell differentiation, cell division, cell adhesion, and stress response. Activity of ABL protein is negatively regulated by its SH3 domain and deletion of the SH3 domain turns ABL1 into an oncogene. Translocation and head-to-tail fusion of the BCR and ABL1 genes is present in many cases of chronic myelogenous leukemia. The DNA-binding activity of the ubiquitously expressed ABL1 tyrosine kinase is regulated by CDK1-mediated phosphorylation, suggesting a cell cycle function for ABL1.
<b>Applications</b>	Kinase Assay, Western Blot.
<b>Stability</b>	Store product at $-70^{\circ}\text{C}$ . For optimal storage, aliquot target into smaller quantities after centrifugation and store at recommended temperature. For most favorable performance, avoid repeated handling and multiple freeze/thaw cycles.

### GENE INFORMATION

 Tel: 1-631-559-9269 1-516-512-3133

 Email: [info@creative-biomart.com](mailto:info@creative-biomart.com)  Fax: 1-631-938-8127

 45-1 Ramsey Road, Shirley, NY 11967, USA

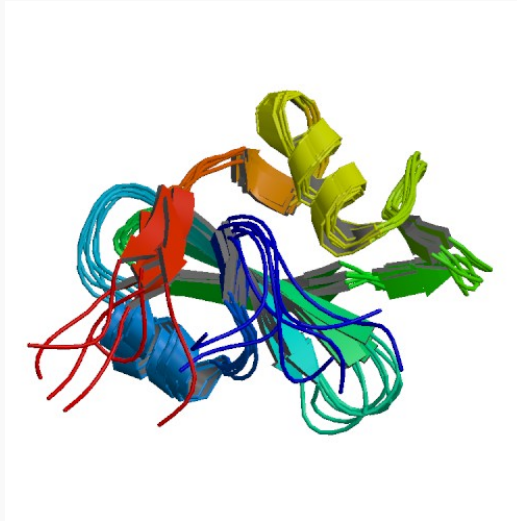
<b>Gene Name</b>	<a href="#">Abl1 c-abl oncogene 1, receptor tyrosine kinase [ Mus musculus ]</a>
<b>Synonyms</b>	<a href="#">Abl1</a> ; <a href="#">c-abl oncogene 1, receptor tyrosine kinase</a> ; <a href="#">Abl</a> ; <a href="#">c-Abl</a> ; <a href="#">AI325092</a> ; <a href="#">MGC117749</a> ; <a href="#">E430008G22Rik</a>
<b>Gene ID</b>	<a href="#">11350</a>
<b>mRNA Refseq</b>	<a href="#">NM_001112703</a>
<b>Protein Refseq</b>	<a href="#">NP_001106174</a>
<b>UniProt ID</b>	<a href="#">P00520</a>
<b>Chromosome Location</b>	2 21.0 cM
<b>Pathway</b>	<a href="#">Axon guidance</a> ; <a href="#">Cell cycle</a> ; <a href="#">Chronic myeloid leukemia</a> ; <a href="#">ErbB signaling pathway</a> ; <a href="#">Neurotrophin signaling pathway</a> ; <a href="#">Pathways in cancer</a>
<b>Function</b>	<a href="#">ATP binding</a> ; <a href="#">magnesium ion binding</a> ; <a href="#">non-membrane spanning protein tyrosine kinase activity</a> ; <a href="#">nucleotide binding</a> ; <a href="#">protein domain specific binding</a> ; <a href="#">protein kinase activity</a> ; <a href="#">protein tyrosine kinase activity</a> ; <a href="#">transferase activity</a>

 Tel: 1-631-559-9269 1-516-512-3133

 Email: [info@creative-biomart.com](mailto:info@creative-biomart.com)  Fax: 1-631-938-8127

 45-1 Ramsey Road, Shirley, NY 11967, USA

PDB rendering based  
on 1ab2.



 Tel: 1-631-559-9269 1-516-512-3133

 Email: [info@creative-biomart.com](mailto:info@creative-biomart.com)  Fax: 1-631-938-8127

 45-1 Ramsey Road, Shirley, NY 11967, USA