

Recombinant Mouse Abl2, His-tagged, Active

Cat. No. Abl2-233M **Lot. No.** (See product label)

SPECIFICATION

Product Overview	Recombinant mouse ABL2 (38-end) was expressed by baculovirus in <i>Sf9 insect cell</i> using an N-terminal His tag. MW=132kDa.
Species	Mouse
Source	Sf9 Cells
Protein Length	38-end a.a.
Description	<p>ABL2 (or ARG) is a nonreceptor cytoplasmic tyrosine kinase which is closely related to but distinct from ABL1. The similarity of ABL1 and ABL2 includes the tyrosine kinase domains and extends amino-terminal to include the SH2 and SH3 domains. ABL2 is involved in translocation with the ETV6 gene in human leukemia and has an altered expression in several human carcinomas. Two isoforms of ABL2 with different N-termini (1A and 1B) have been identified. The C-terminal domain of ABL2 contains two F-actin-binding sequences that perform a number of actions related to cell morphology and motility by interacting with actin filaments.</p>
Sequence	38-end.
Applications	Kinase Assay, Western Blot.
Stability	Store product at -70oC. For optimal storage, aliquot target into smaller quantities after centrifugation and store at recommended temperature. For most favorable performance, avoid repeated handling and multiple freeze/thaw cycles.

 Tel: 1-631-559-9269 1-516-512-3133

 Email: info@creative-biomart.com  Fax: 1-631-938-8127

 45-1 Ramsey Road, Shirley, NY 11967, USA

GENE INFORMATION

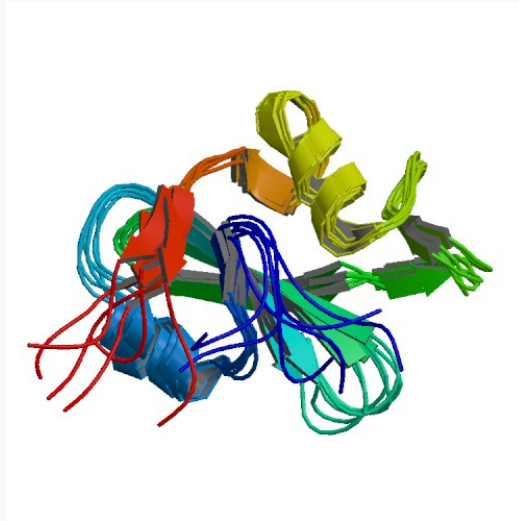
Gene Name	Abl2 v-abl Abelson murine leukemia viral oncogene homolog 2 (arg, Abelson-related gene) [Mus musculus]
Synonyms	Abl2; v-abl Abelson murine leukemia viral oncogene homolog 2 (arg, Abelson-related gene); Arg; Abll; AA536808; MGC169395; Abelson-related gene protein
Gene ID	11352
mRNA Refseq	NM_001136104
Protein Refseq	NP_001129576
UniProt ID	Q4JIM5
Chromosome Location	1 G3-H1; 1 82.1 cM
Pathway	ErbB signaling pathway
Function	ATP binding; magnesium ion binding; non-membrane spanning protein tyrosine kinase activity; nucleotide binding; protein domain specific binding; protein kinase activity; protein tyrosine kinase activity; transferase activity

 Tel: 1-631-559-9269 1-516-512-3133

 Email: info@creative-biomart.com  Fax: 1-631-938-8127

 45-1 Ramsey Road, Shirley, NY 11967, USA

PDB rendering based
on 1ab2.



 Tel: 1-631-559-9269 1-516-512-3133

 Email: info@creative-biomart.com  Fax: 1-631-938-8127

 45-1 Ramsey Road, Shirley, NY 11967, USA