

## Recombinant Mouse Ace protein, His & MBP-tagged

Cat. No. Ace-512M Lot. No. (See product label)

### SPECIFICATION

<b>Product Overview</b>	Recombinant Mouse Ace (Q3TU20) aa. (Tyr504~Asp597) fused with N-terminal His & MBP tag was produced in E. coli cells.
<b>Species</b>	Mouse
<b>Source</b>	E.coli
<b>ProteinLength</b>	Tyr504~Asp597
<b>Form</b>	Freeze-dried powder
<b>Molecular Mass</b>	Predicted Molecular Mass: 55.2kDa
<b>Endotoxin</b>	<1.0EU per 1g (determined by the LAL method)
<b>Purity</b>	> 95%
<b>Characteristic</b>	The isoelectric point is 5.9.
<b>Applications</b>	SDS-PAGE; WB; ELISA; IP
<b>Stability</b>	The thermal stability is described by the loss rate. The loss rate was determined by accelerated thermal degradation test, that is, incubate the protein at 37°C for 48h, and no obvious degradation and precipitation were observed. The loss rate is less than 5% within the expiration date under appropriate storage condition.

 Tel: 1-631-559-9269 1-516-512-3133

 Email: [info@creative-biomart.com](mailto:info@creative-biomart.com)  Fax: 1-631-938-8127

 45-1 Ramsey Road, Shirley, NY 11967, USA

<b>Storage</b>	Avoid repeated freeze/thaw cycles. Store at 2-8°C for one month. Aliquot and store at -80°C for 12 months.
<b>Storage buffer</b>	PBS, pH7.4, containing 5% sucrose, 0.01% sarcosyl.
<b>Reconstitution</b>	Reconstitute in sterile PBS, pH7.2-pH7.4

## GENE INFORMATION

<b>Gene Name</b>	<a href="#">Ace angiotensin I converting enzyme (peptidyl-dipeptidase A) 1 [ Mus musculus (house mouse) ]</a>
<b>Official Symbol</b>	<a href="#">Ace</a>
<b>Synonyms</b>	Ace; angiotensin I converting enzyme (peptidyl-dipeptidase A) 1; CD143; AW208573; angiotensin-converting enzyme; dipeptidyl carboxypeptidase I; dipeptidyl peptidase; kininase II
<b>Gene ID</b>	<a href="#">11421</a>
<b>mRNA Refseq</b>	<a href="#">NM_001281819.1</a>
<b>Protein Refseq</b>	<a href="#">NP_001268748.1</a>
<b>UniProt ID</b>	<a href="#">Q3TU20</a>

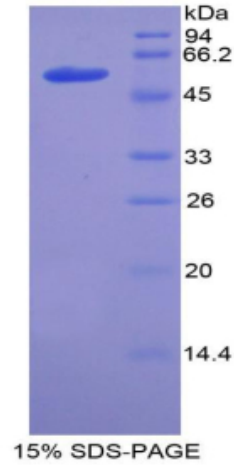
 Tel: 1-631-559-9269 1-516-512-3133

 Email: [info@creative-biomart.com](mailto:info@creative-biomart.com)  Fax: 1-631-938-8127

 45-1 Ramsey Road, Shirley, NY 11967, USA



SDS-PAGE



Tel: 1-631-559-9269 1-516-512-3133

Email: [info@creative-biomart.com](mailto:info@creative-biomart.com) Fax: 1-631-938-8127

45-1 Ramsey Road, Shirley, NY 11967, USA