

## Recombinant Rat ACE2 Protein, Fc-tagged

Cat. No. Ace2-033R Lot. No. (See product label)

### SPECIFICATION

<b>Product Overview</b>	Recombinant Rat ACE2 Protein (18-740) was expressed in CHO cells using a C-terminal Fc tag.
<b>Species</b>	Rat
<b>Source</b>	CHO
<b>ProteinLength</b>	18-740
<b>Description</b>	Biased expression in Kidney (RPKM 108.4), Lung (RPKM 75.2) and 5 other tissues.
<b>Molecular Mass</b>	150 kDa
<b>Purity</b>	> 90%
<b>Applications</b>	ELISA
<b>Stability</b>	One year at -70 centigrade from date of shipment.
<b>Storage</b>	Store product at -70 centigrade. For optimal storage, aliquot targets into smaller quantities after centrifugation and store at the recommended temperature. For most favorable performance, avoid repeated handling and multiple freeze/thaw cycles.
<b>Concentration</b>	1 µg/µL

 Tel: 1-631-559-9269 1-516-512-3133

 Email: [info@creative-biomart.com](mailto:info@creative-biomart.com)  Fax: 1-631-938-8127

 45-1 Ramsey Road, Shirley, NY 11967, USA

**Storage Buffer** Recombinant protein stored in 50 mM Tris-HCl, pH 7.5, 90 mM glycine.

**Shipping** Dry ice

## GENE INFORMATION

**Gene Name** *Ace2* angiotensin I converting enzyme 2 [ *Rattus norvegicus* (Norway rat) ]

**Official Symbol** *Ace2*

**Synonyms**

*Ace2*; angiotensin I converting enzyme 2; angiotensin-converting enzyme 2; ACE-related carboxypeptidase; angiotensin I converting enzyme (peptidyl-dipeptidase A) 2; anigotensin-converting enzyme-related carboxypeptidase; renal angiotensin-converting enzyme 2; EC 3.4.17.23

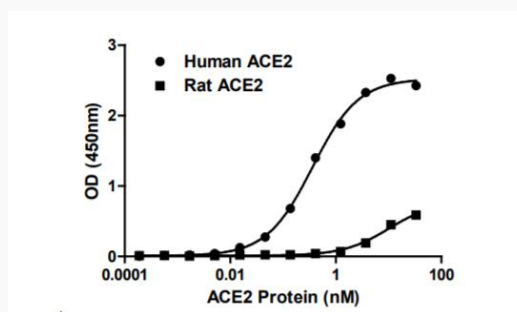
**Gene ID** 302668

**mRNA Refseq** NM\_001012006

**Protein Refseq** NP\_001012006

**UniProt ID** Q5EGZ1

**Activity**



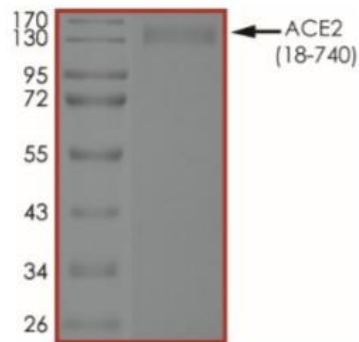
Tel: 1-631-559-9269 1-516-512-3133

Email: [info@creative-biomart.com](mailto:info@creative-biomart.com) Fax: 1-631-938-8127

45-1 Ramsey Road, Shirley, NY 11967, USA

Binding ability measured in a functional ELISA. Unlike human ACE2, Rat ACE2 (18-740) Protein does not bind well to immobilized 2019-nCoV Spike Protein RBD.

**Purity**



The purity of Rat ACE2 Protein was determined to be > 90 % by densitometry, approx. MW 150 kDa.