

Recombinant Rat Ace2 Protein, His-tagged

Cat. No. Ace2-35R Lot. No. (See product label)

SPECIFICATION

Product Overview	Recombinant Rat Ace2 Protein (Leu392-Val739) with N-His tag was expressed in E. coli.
Species	Rat
Source	E.coli
ProteinLength	Leu392-Val739
Description	Enables carboxypeptidase activity. Involved in maternal process involved in female pregnancy; negative regulation of ERK1 and ERK2 cascade; and negative regulation of smooth muscle cell proliferation. Located in extracellular space and membrane. Used to study glaucoma; myocardial infarction; and thrombosis. Biomarker of hypertension; lung disease; middle cerebral artery infarction; myocardial infarction; and primary biliary cholangitis. Human ortholog(s) of this gene implicated in several diseases, including avian influenza; cerebral malaria; hypertension (multiple); respiratory syncytial virus infectious disease; and severe acute respiratory syndrome. Orthologous to human ACE2 (angiotensin converting enzyme 2).
Form	Freeze-dried powder
Molecular Mass	Predicted Molecular Mass: 43.9 kDa Accurate Molecular Mass: 44 kDa
Purity	> 97%

 Tel: 1-631-559-9269 1-516-512-3133

 Email: info@creative-biomart.com  Fax: 1-631-938-8127

 45-1 Ramsey Road, Shirley, NY 11967, USA

Applications	Cell culture; Activity Assays.
Stability	The thermal stability is described by the loss rate. The loss rate was determined by accelerated thermal degradation test, that is, incubate the protein at 37 centigrade for 48h, and no obvious degradation and precipitation were observed. The loss rate is less than 5% within the expiration date under appropriate storage condition.
Storage	Avoid repeated freeze/thaw cycles. Store at 2-8 centigrade for one month. Aliquot and store at -80 centigrade for 12 months.
Storage Buffer	20mM Tris, 150mM NaCl, pH8.0, containing 1mM EDTA, 1mM DTT, 0.01% SKL, 5% Trehalose and Proclin300.
Reconstitution	Reconstitute in sterile water to a concentration of 0.1-1.0 mg/mL. Do not vortex.

GENE INFORMATION

Gene Name	Ace2 angiotensin I converting enzyme (peptidyl-dipeptidase A) 2 [Rattus norvegicus (Norway rat)]
Official Symbol	Ace2
Synonyms	ACE2; angiotensin I converting enzyme (peptidyl-dipeptidase A) 2; angiotensin-converting enzyme 2; ACE-related carboxypeptidase; angiotensin I converting enzyme 2; renal angiotensin-converting enzyme 2; anigotensin-converting enzyme-related carboxypeptidase
Gene ID	302668
mRNA Refseq	NM_001012006

 Tel: 1-631-559-9269 1-516-512-3133

 Email: info@creative-biomart.com  Fax: 1-631-938-8127

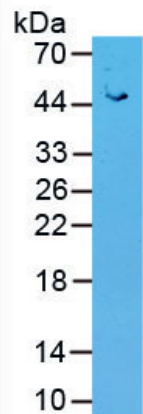
 45-1 Ramsey Road, Shirley, NY 11967, USA

Protein Refseq NP_001012006

UniProt ID Q5EGZ1



WB



 Tel: 1-631-559-9269 1-516-512-3133

 Email: info@creative-biomart.com  Fax: 1-631-938-8127

 45-1 Ramsey Road, Shirley, NY 11967, USA