

Recombinant Mouse Ace2 Protein, His-tagged

Cat. No. Ace2-37M Lot. No. (See product label)

SPECIFICATION

Product Overview	Recombinant Mouse Ace2 Protein (Gln18-Thr740) with N-His tag was expressed in 293F.
Species	Mouse
Source	HEK293
ProteinLength	Gln18-Thr740
Description	Enables carboxypeptidase activity. Involved in maternal process involved in female pregnancy; negative regulation of ERK1 and ERK2 cascade; and negative regulation of smooth muscle cell proliferation. Located in extracellular space and membrane. Used to study glaucoma; myocardial infarction; and thrombosis. Biomarker of hypertension; lung disease; middle cerebral artery infarction; myocardial infarction; and primary biliary cholangitis. Human ortholog(s) of this gene implicated in several diseases, including avian influenza; cerebral malaria; hypertension (multiple); respiratory syncytial virus infectious disease; and severe acute respiratory syndrome. Orthologous to human ACE2 (angiotensin converting enzyme 2).
Form	Freeze-dried powder
Molecular Mass	Predicted Molecular Mass: 85.2 kDa Accurate Molecular Mass: 87 kDa
Purity	> 97%

 Tel: 1-631-559-9269 1-516-512-3133

 Email: info@creative-biomart.com  Fax: 1-631-938-8127

 45-1 Ramsey Road, Shirley, NY 11967, USA

Applications	Positive Control; Immunogen; SDS-PAGE; WB.
Stability	The thermal stability is described by the loss rate. The loss rate was determined by accelerated thermal degradation test, that is, incubate the protein at 37 centigrade for 48h, and no obvious degradation and precipitation were observed. The loss rate is less than 5% within the expiration date under appropriate storage condition.
Storage	Avoid repeated freeze/thaw cycles. Store at 2-8 centigrade for one month. Aliquot and store at -80 centigrade for 12 months.
Storage Buffer	20mM Tris, 150mM NaCl, pH8.0, containing 1mM EDTA, 1mM DTT, 0.01% SKL, 5% Trehalose and Proclin300.
Reconstitution	Reconstitute in sterile water to a concentration of 0.1-1.0 mg/mL. Do not vortex.

GENE INFORMATION

Gene Name	Ace2 angiotensin I converting enzyme (peptidyl-dipeptidase A) 2 [Mus musculus (house mouse)]
Official Symbol	Ace2
Synonyms	ACE2; angiotensin I converting enzyme (peptidyl-dipeptidase A) 2; angiotensin-converting enzyme 2; ACE-related carboxypeptidase; angiotensin I converting enzyme 2; 2010305L05Rik
Gene ID	70008
mRNA Refseq	NM_001130513
Protein Refseq	NP_001123985

 Tel: 1-631-559-9269 1-516-512-3133

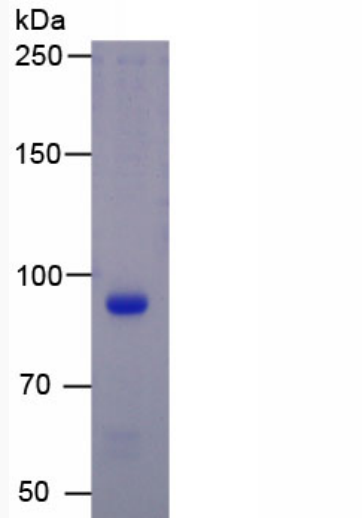
 Email: info@creative-biomart.com  Fax: 1-631-938-8127

 45-1 Ramsey Road, Shirley, NY 11967, USA



UniProt ID

Q8R0I0



Tel: 1-631-559-9269 1-516-512-3133

Email: info@creative-biomart.com Fax: 1-631-938-8127

45-1 Ramsey Road, Shirley, NY 11967, USA