

## Recombinant Rat Ace2 Protein, His-tagged

Cat. No. Ace2-38R Lot. No. (See product label)

### SPECIFICATION

<b>Product Overview</b>	Recombinant Rat Ace2 Protein (Met1-Thr740) with N-His tag was expressed in 293F.
<b>Species</b>	Rat
<b>Source</b>	HEK293
<b>ProteinLength</b>	Met1-Thr740
<b>Description</b>	<p>Enables carboxypeptidase activity. Involved in maternal process involved in female pregnancy; negative regulation of ERK1 and ERK2 cascade; and negative regulation of smooth muscle cell proliferation. Located in extracellular space and membrane.</p> <p>Used to study glaucoma; myocardial infarction; and thrombosis. Biomarker of hypertension; lung disease; middle cerebral artery infarction; myocardial infarction; and primary biliary cholangitis. Human ortholog(s) of this gene implicated in several diseases, including avian influenza; cerebral malaria; hypertension (multiple); respiratory syncytial virus infectious disease; and severe acute respiratory syndrome. Orthologous to human ACE2 (angiotensin converting enzyme 2).</p>
<b>Form</b>	Freeze-dried powder
<b>Molecular Mass</b>	Predicted Molecular Mass: 87.2 kDa Accurate Molecular Mass: 87 kDa
<b>Purity</b>	> 97%

 Tel: 1-631-559-9269 1-516-512-3133

 Email: [info@creative-biomart.com](mailto:info@creative-biomart.com)  Fax: 1-631-938-8127

 45-1 Ramsey Road, Shirley, NY 11967, USA

<b>Applications</b>	Positive Control; Immunogen; SDS-PAGE; WB.
<b>Stability</b>	The thermal stability is described by the loss rate. The loss rate was determined by accelerated thermal degradation test, that is, incubate the protein at 37 centigrade for 48h, and no obvious degradation and precipitation were observed. The loss rate is less than 5% within the expiration date under appropriate storage condition.
<b>Storage</b>	Avoid repeated freeze/thaw cycles. Store at 2-8 centigrade for one month. Aliquot and store at -80 centigrade for 12 months.
<b>Storage Buffer</b>	20mM Tris, 150mM NaCl, pH8.0, containing 1mM EDTA, 1mM DTT, 0.01% SKL, 5% Trehalose and Proclin300.
<b>Reconstitution</b>	Reconstitute in sterile water to a concentration of 0.1-1.0 mg/mL. Do not vortex.

## GENE INFORMATION

<b>Gene Name</b>	<a href="#">Ace2 angiotensin I converting enzyme (peptidyl-dipeptidase A) 2 [ Rattus norvegicus (Norway rat) ]</a>
<b>Official Symbol</b>	<a href="#">Ace2</a>
<b>Synonyms</b>	ACE2; angiotensin I converting enzyme (peptidyl-dipeptidase A) 2; angiotensin-converting enzyme 2; ACE-related carboxypeptidase; angiotensin I converting enzyme 2; renal angiotensin-converting enzyme 2; anigotensin-converting enzyme-related carboxypeptidase
<b>Gene ID</b>	<a href="#">302668</a>
<b>mRNA Refseq</b>	<a href="#">NM_001012006</a>

 Tel: 1-631-559-9269 1-516-512-3133

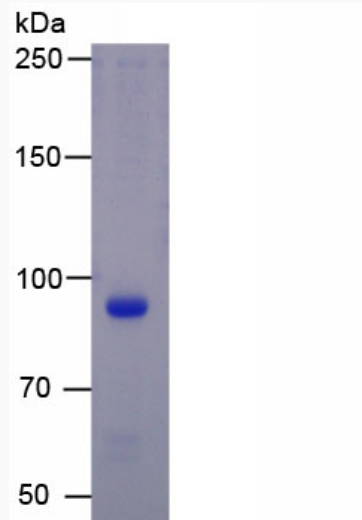
 Email: [info@creative-biomart.com](mailto:info@creative-biomart.com)  Fax: 1-631-938-8127

 45-1 Ramsey Road, Shirley, NY 11967, USA



Protein Refseq NP\_001012006

UniProt ID Q5EGZ1



Tel: 1-631-559-9269 1-516-512-3133

Email: [info@creative-biomart.com](mailto:info@creative-biomart.com) Fax: 1-631-938-8127

45-1 Ramsey Road, Shirley, NY 11967, USA