

Recombinant Rat Ache protein(32-614aa), His-tagged

Cat. No. Ache-2291R Lot. No. (See product label)

SPECIFICATION

Product Overview	Recombinant Rat Ache protein(P37136)(32-614aa), fused with N-terminal His tag, was expressed in E. coli.
Species	Rat
Source	E.coli
ProteinLength	32-614aa
Form	If the delivery form is liquid, the default storage buffer is Tris/PBS-based buffer, 5%-50% glycerol. If the delivery form is lyophilized powder, the buffer before lyophilization is Tris/PBS-based buffer, 6% Trehalose, pH 8.0.
Molecular Mass	68.9 kDa
Purity	Greater than 85% as determined by SDS-PAGE.
Storage	Store at -20°C/-80°C upon receipt, aliquoting is necessary for mutiple use. Avoid repeated freeze-thaw cycles.
Reconstitution	We recommend that this vial be briefly centrifuged prior to opening to bring the contents to the bottom. Please reconstitute protein in deionized sterile water to a concentration of 0.1-1.0 mg/mL. We recommend to add 5-50% of glycerol (final concentration) and aliquot for long-term storage at -20°C/-80°C.

 Tel: 1-631-559-9269 1-516-512-3133

 Email: info@creative-biomart.com  Fax: 1-631-938-8127

 45-1 Ramsey Road, Shirley, NY 11967, USA

AA Sequence

EGREDPQLLVRVRGGQLRGIRLKAPGGPVSAFLGIPFAEPPVGSRRFMPPEPKRPW
 SGILDATTFQNVCYQYVDTLYPGFEGTEMWNPNRESEDCLYLNVWTPYPRPTSPT
 PVLIWIYGGGFYSGASSLDVYDGRFLAQVEGTVLVSMNYRVGTFGFLALPGSREAP
 GNVGLLDQRLALQWVQENIAAFGGDPMSTLFGESAGAASVGMHILSLPSRSLFHR
 AVLQSGTPNGPWATVSAGEARRRATLLARLVGCPPGGAGGNDTELISCLRTRPAQ
 DLVDHEWHVLPQESIFRFSFVPVVDGDFLSDTPDALINTGDFQDLQVLVGVVKDEGS
 YFLVYGVPGFSKDNESLISRAQFLAGVRIGVPQASDLAAEAVVLHYTDWLHPEDPAH
 LRDAMSAVVDHNVVCPVAQLAGRLAAQGARVYAYIFEHRASLTWPLWMGVPHG
 YEIEFIFGLPLDPSLNYTVEERIFAQRLMQYWTNFARTGDPNDPRDSKSPRWPPYTT
 AAQQYVSLNLKPLEVRRGLRAQTCAFWRNRLPKLLSATDTLDEAERQWKAEFHRW
 SSYMVHWKNQFDHYSKQERCSDL

GENE INFORMATION

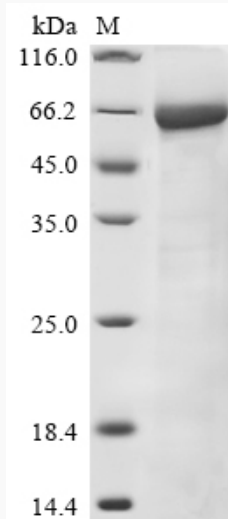
Gene Name	Ache acetylcholinesterase [Rattus norvegicus]
Official Symbol	Ache
Synonyms	ACHE; acetylcholinesterase; glycolipid-anchored form of acetylcholinesterase;
Gene ID	83817
mRNA Refseq	NM_172009
Protein Refseq	NP_742006

 Tel: 1-631-559-9269 1-516-512-3133

 Email: info@creative-biomart.com  Fax: 1-631-938-8127

 45-1 Ramsey Road, Shirley, NY 11967, USA

SDS-PAGE



 Tel: 1-631-559-9269 1-516-512-3133

 Email: info@creative-biomart.com  Fax: 1-631-938-8127

 45-1 Ramsey Road, Shirley, NY 11967, USA