

Active Recombinant Rat Acvr11 protein, His&hFc-tagged

Cat. No. Acvr11-245R Lot. No. (See product label)

SPECIFICATION

Product Overview	Active Recombinant Rat Acvr11 protein(NP_071886.1)(Met 1-Ala 118) was expressed in HEK293, fused with the C-terminal polyhistidine-tagged Fc region of human IgG1 at the C-terminus.
Species	Rat
Source	HEK293
ProteinLength	1-118 aa
Form	Lyophilized from sterile PBS, pH 7.4.
Bio-activity	Measured by its ability to inhibit BMP9 induced alkaline phosphatase production by MC3T3E1 mouse chondrogenic cells. David, L. et al. (2007) Blood 109:1953. The ED50 for this effect is typically 40-200 ng/mL in the presence of 2 ng/mL of recombinant human BMP9.
Molecular Mass	The secreted recombinant rat ACVRL1/Fc is a disulfide-linked homodimer after removal of the signal peptide. The reduced monomer comprises 343 amino acids with a predicted molecular mass of 38.7 kDa. As a result of glycosylation, it migrates as an approximately 50-55 kDa band in SDS-PAGE under reducing conditions.
Endotoxin	< 1.0 EU per µg protein as determined by the LAL method.
Purity	> 90 % as determined by SDS-PAGE

 Tel: 1-631-559-9269 1-516-512-3133

 Email: info@creative-biomart.com  Fax: 1-631-938-8127

 45-1 Ramsey Road, Shirley, NY 11967, USA

Storage Store it under sterile conditions at -20°C to -80°C upon receiving. Recommend to aliquot the protein into smaller quantities for optimal storage. Avoid repeated freeze-thaw cycles.

Reconstitution It is recommended that sterile water be added to the vial to prepare a stock solution of 0.2 ug/ul. Centrifuge the vial at 4°C before opening to recover the entire contents.

GENE INFORMATION

Gene Name [Acvr1 activin A receptor type II-like 1 \[Rattus norvegicus \]](#)

Official Symbol [Acvr1](#)

Synonyms ACVRL1; activin A receptor type II-like 1; serine/threonine-protein kinase receptor R3; SKR3; TSR-I; Activin receptor likekinase 1; TGF-B superfamily receptor type I; R3; R-3; SETHKIR;

Gene ID [25237](#)

mRNA Refseq [NM_022441](#)

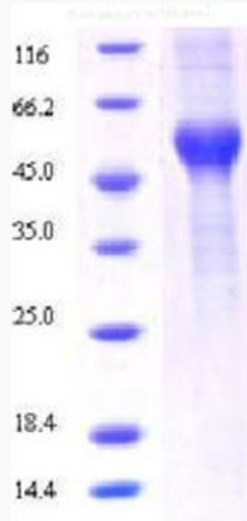
Protein Refseq [NP_071886](#)

 Tel: 1-631-559-9269 1-516-512-3133

 Email: info@creative-biomart.com  Fax: 1-631-938-8127

 45-1 Ramsey Road, Shirley, NY 11967, USA

SDS-PAGE



 Tel: 1-631-559-9269 1-516-512-3133

 Email: info@creative-biomart.com  Fax: 1-631-938-8127

 45-1 Ramsey Road, Shirley, NY 11967, USA