

## Recombinant Rat Adam10 protein, His-tagged

Cat. No. Adam10-7639R Lot. No. (See product label)

### SPECIFICATION

**Product Overview** Recombinant Rat Adam10 aa. (Thr218~Asp445 (Accession # Q10743)) fused with N-terminal His tag was produced in E. coli cells.

**Species** Rat

**Source** E.coli

**ProteinLength** Thr218~Asp445

**Form** Freeze-dried powder

**Molecular Mass** Predicted Molecular Mass: 26.5kDa

**Endotoxin** <1.0EU per 1g (determined by the LAL method)

**Purity** >95%

**Characteristic** The isoelectric point is 6.4.

**Applications** SDS-PAGE; WB; ELISA; IP.

**Stability** The thermal stability is described by the loss rate. The loss rate was determined by accelerated thermal degradation test, that is, incubate the protein at 37°C for 48h, and no obvious degradation and precipitation were observed. The loss rate is less than 5% within the expiration date under appropriate storage condition.

 Tel: 1-631-559-9269 1-516-512-3133

 Email: [info@creative-biomart.com](mailto:info@creative-biomart.com)  Fax: 1-631-938-8127

 45-1 Ramsey Road, Shirley, NY 11967, USA

<b>Storage</b>	Avoid repeated freeze/thaw cycles. Store at 2-8°C for one month. Aliquot and store at -80°C for 12 months.
<b>Storage buffer</b>	Supplied as lyophilized form in PBS, pH7.4, containing 5% sucrose, 0.01% sarcosyl.
<b>Reconstitution</b>	Reconstitute in sterile PBS, pH7.2-pH7.4.

## GENE INFORMATION

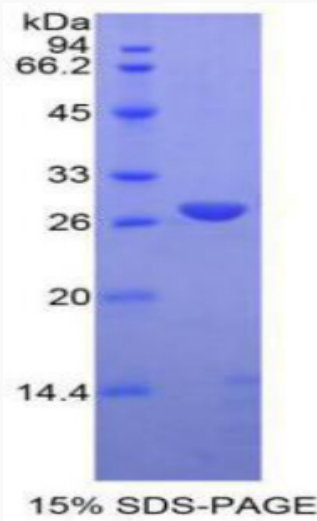
<b>Gene Name</b>	Adam10 ADAM metallopeptidase domain 10 [ <i>Rattus norvegicus</i> (Norway rat) ]
<b>Official Symbol</b>	Adam10
<b>Synonyms</b>	MADM; ADAM 10; RGD1566370; a disintegrin and metallopeptidase domain 10; a disintegrin and metalloprotease domain 10; kuzbanian protein homolog; mammalian disintegrin-metalloprotease; disintegrin and metalloproteinase domain-containing protein 10
<b>Gene ID</b>	29650
<b>mRNA Refseq</b>	NM_019254.1
<b>Protein Refseq</b>	NP_062127.1
<b>UniProt ID</b>	Q10743

 Tel: 1-631-559-9269 1-516-512-3133

 Email: [info@creative-biomart.com](mailto:info@creative-biomart.com)  Fax: 1-631-938-8127

 45-1 Ramsey Road, Shirley, NY 11967, USA

SDS-PAGE



 Tel: 1-631-559-9269 1-516-512-3133

 Email: [info@creative-biomart.com](mailto:info@creative-biomart.com)  Fax: 1-631-938-8127

 45-1 Ramsey Road, Shirley, NY 11967, USA