

## Recombinant Rat Adam1a protein, His & T7-tagged

**Cat. No.** Adam1a-1609R    **Lot. No.** (See product label)

### SPECIFICATION

<b>Product Overview</b>	Recombinant Rat Adam1a aa. (Ser463~Gly727 (Accession # P70505)) fused with N-terminal His & T7 tag was produced in E. coli cells.
<b>Species</b>	Rat
<b>Source</b>	E.coli
<b>ProteinLength</b>	Ser463~Gly727
<b>Description</b>	Membrane-anchored glycoprotein and metalloproteinase-like, disintegrin-like, cysteine-rich (MDC) family member that is localized on the sperm surface where it may play a role in fertilization.
<b>Form</b>	Freeze-dried powder
<b>Molecular Mass</b>	37kDa as determined by SDS-PAGE reducing conditions.
<b>Endotoxin</b>	<1.0EU per 1ug (determined by the LAL method)
<b>Purity</b>	>95%
<b>Applications</b>	SDS-PAGE; WB; ELISA; IP.
<b>Stability</b>	The thermal stability is described by the loss rate. The loss rate was determined by accelerated thermal degradation test, that is, incubate the protein at 37°C for 48h,

 Tel: 1-631-559-9269    1-516-512-3133

 Email: [info@creative-biomart.com](mailto:info@creative-biomart.com)     Fax: 1-631-938-8127

 45-1 Ramsey Road, Shirley, NY 11967, USA

and no obvious degradation and precipitation were observed. The loss rate is less than 5% within the expiration date under appropriate storage condition.

**Storage**

Avoid repeated freeze/thaw cycles. Store at 2-8°C for one month. Aliquot and store at -80°C for 12 months.

**Storage buffer**

Supplied as lyophilized form in PBS, pH7.4, containing 5% trehalose, 0.01% sarcosyl.

**Reconstitution**

Reconstitute in sterile PBS, pH7.2-pH7.4.

**Isoelectric Point**

5.6

## GENE INFORMATION

**Gene Name**

[Adam1a ADAM metalloproteinase domain 1A \[ Rattus norvegicus \(Norway rat\) \]](#)

**Official Symbol**

[Adam1a](#)

**Synonyms**

Adam1a; ADAM metalloproteinase domain 1A; Adam1; PH-30a; disintegrin and metalloproteinase domain-containing protein 1; ADAM 1; PH-30 alpha; a disintegrin and metalloproteinase domain 1a; a disintegrin and metalloproteinase domain 1 (fertilin alpha); a disintegrin and metalloproteinase domain 1 (fertilin alpha); fertilin alpha; fertilin subunit alpha

**Gene ID**

[56777](#)

**mRNA Refseq**

[NM\\_020078.1](#)

**Protein Refseq**

[NP\\_064463.1](#)

**UniProt ID**

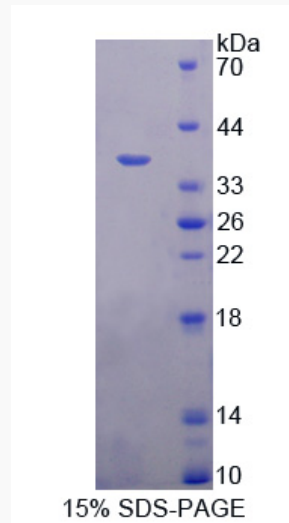
[P70505](#)

 Tel: 1-631-559-9269 1-516-512-3133

 Email: [info@creative-biomart.com](mailto:info@creative-biomart.com)  Fax: 1-631-938-8127

 45-1 Ramsey Road, Shirley, NY 11967, USA

**SDS-PAGE**



 Tel: 1-631-559-9269 1-516-512-3133

 Email: [info@creative-biomart.com](mailto:info@creative-biomart.com)  Fax: 1-631-938-8127

 45-1 Ramsey Road, Shirley, NY 11967, USA