

Recombinant Mouse Adh1 protein, His & T7-tagged

Cat. No. Adh1-778M **Lot. No.** (See product label)

SPECIFICATION

Product Overview	Recombinant Mouse Adh1 aa. (Glu25~Asp228 (Accession # P00329)) fused with N-terminal His & T7 tag was produced in E. coli cells.
Species	Mouse
Source	E.coli
ProteinLength	Glu25~Asp228
Form	Freeze-dried powder
Molecular Mass	Predicted Molecular Mass: 24.9kDa
Endotoxin	<1.0EU per 1g (determined by the LAL method)
Purity	>95%
Characteristic	The isoelectric point is 8.
Applications	SDS-PAGE; WB; ELISA; IP.
Stability	The thermal stability is described by the loss rate. The loss rate was determined by accelerated thermal degradation test, that is, incubate the protein at 37°C for 48h, and no obvious degradation and precipitation were observed. The loss rate is less than 5% within the expiration date under appropriate storage condition.

 Tel: 1-631-559-9269 1-516-512-3133

 Email: info@creative-biomart.com  Fax: 1-631-938-8127

 45-1 Ramsey Road, Shirley, NY 11967, USA

Storage	Avoid repeated freeze/thaw cycles. Store at 2-8°C for one month. Aliquot and store at -80°C for 12 months.
Storage buffer	Supplied as lyophilized form in PBS, pH7.4, containing 5% sucrose, 0.01% sarcosyl.
Reconstitution	Reconstitute in sterile PBS, pH7.2-pH7.4.

GENE INFORMATION

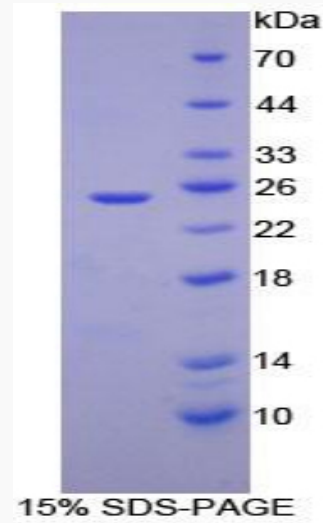
Gene Name	Adh1 alcohol dehydrogenase 1 (class I) [Mus musculus (house mouse)]
Official Symbol	Adh1
Synonyms	Adh-1; ADH-AA; Adh-1e; Adh-1t; Adh-3e; Adh1-e; Adh1-t; Adh1tl; Adh3-e; Adh-1-t; AI194826; ADH-A2; alcohol dehydrogenase 1 temporal, liver; alcohol dehydrogenase 1, complex; alcohol dehydrogenase 1, electrophoretic; alcohol dehydrogenase 3, electrophoretic; alcohol dehydrogenase A subunit; class I alcohol dehydrogenase; alcohol dehydrogenase 1
Gene ID	11522
mRNA Refseq	NM_007409.2
Protein Refseq	NP_031435.1
UniProt ID	P00329

 Tel: 1-631-559-9269 1-516-512-3133

 Email: info@creative-biomart.com  Fax: 1-631-938-8127

 45-1 Ramsey Road, Shirley, NY 11967, USA

SDS-PAGE



 Tel: 1-631-559-9269 1-516-512-3133

 Email: info@creative-biomart.com  Fax: 1-631-938-8127

 45-1 Ramsey Road, Shirley, NY 11967, USA