

Recombinant Mouse Aga Protein, His-tagged

Cat. No. Aga-550M Lot. No. (See product label)

SPECIFICATION

Product Overview	Recombinant Mouse Aga(Ser24~Gly260) fused with His tag at N-terminal was expressed in E. coli.
Species	Mouse
Source	E.coli
ProteinLength	Ser24~Gly260
Description	This gene encodes an amidase enzyme that participates in the breakdown of glycoproteins in the cell. The encoded protein undergoes proteolytic processing to generate a mature enzyme. Mice lacking the encoded protein exhibit accumulation of aspartylglucosamine along with lysosomal vacuolization, axonal swelling in the gracile nucleus and impaired neuromotor coordination. Alternative splicing results in multiple transcript variants encoding different isoforms that may undergo similar processing to generate mature protein.
Form	PBS, pH7.4, containing 0.01% SKL, 1mM DTT, 5% Trehalose and Proclin300.
Molecular Mass	28.6kDa
Endotoxin	<1.0EU per 1ug (determined by the LAL method)
Purity	> 95%

 Tel: 1-631-559-9269 1-516-512-3133

 Email: info@creative-biomart.com  Fax: 1-631-938-8127

 45-1 Ramsey Road, Shirley, NY 11967, USA

Applications	Positive Control; Immunogen; SDS-PAGE; WB. If bio-activity of the protein is needed, please check active protein
Stability	The thermal stability is described by the loss rate. The loss rate was determined by accelerated thermal degradation test, that is, incubate the protein at 37 centigrade for 48h, and no obvious degradation and precipitation were observed. The loss rate is less than 5% within the expiration date under appropriate storage condition.
Storage	Avoid repeated freeze/thaw cycles. Store at 2-8 centigrade for one month. Aliquot and store at -80 centigrade for 12 months.
Reconstitution	Reconstitute in PBS or others

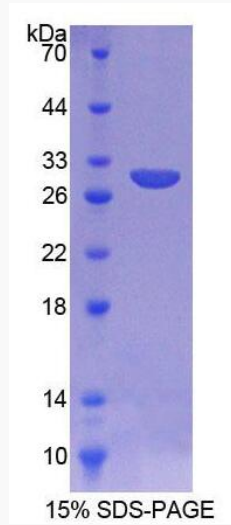
GENE INFORMATION

Gene Name	Aga aspartylglucosaminidase [Mus musculus]
Official Symbol	Aga
Synonyms	AGA; aspartylglucosaminidase; N(4)-(beta-N-acetylglucosaminy)-L-asparaginase; glycosylasparaginase; N4-(N-acetyl-beta-glucosaminy)-L-asparagine amidase; AW060726;
Gene ID	11593
mRNA Refseq	NM_001005847
Protein Refseq	NP_001005847

 Tel: 1-631-559-9269 1-516-512-3133

 Email: info@creative-biomart.com  Fax: 1-631-938-8127

 45-1 Ramsey Road, Shirley, NY 11967, USA



Tel: 1-631-559-9269 1-516-512-3133

Email: info@creative-biomart.com Fax: 1-631-938-8127

45-1 Ramsey Road, Shirley, NY 11967, USA