

Recombinant Rat Ahsg Protein, His-tagged

Cat. No. Ahsg-168R **Lot. No.** (See product label)

SPECIFICATION

Product Overview	Recombinant Rat Ahsg(Ala19~Phe250) fused with His tag at N-terminal was expressed in E. coli.
Species	Rat
Source	E.coli
ProteinLength	Ala19~Phe250
Description	Ahsg played an important role in many functions.
Form	PBS, pH7.4, containing 0.01% SKL, 1mM DTT, 5% Trehalose and Proclin300.
Molecular Mass	27.3kDa
Identity	Reconstitute in PBS or others
Endotoxin	<1.0EU per 1g (determined by the LAL method)
Purity	> 95%
Applications	Positive Control; Immunogen; SDS-PAGE; WB. If bio-activity of the protein is needed, please check active protein
Stability	The thermal stability is described by the loss rate. The loss rate was determined by

 Tel: 1-631-559-9269 1-516-512-3133

 Email: info@creative-biomart.com  Fax: 1-631-938-8127

 45-1 Ramsey Road, Shirley, NY 11967, USA

accelerated thermal degradation test, that is, incubate the protein at 37 centigrade for 48h, and no obvious degradation and precipitation were observed. The loss rate is less than 5% within the expiration date under appropriate storage condition.

Storage

Avoid repeated freeze/thaw cycles. Store at 2-8 centigrade for one month. Aliquot and store at -80 centigrade for 12 months.

Reconstitution

Reconstitute in PBS or others

GENE INFORMATION

Gene Name

Ahsg alpha-2-HS-glycoprotein [*Rattus norvegicus*]

Official Symbol

Ahsg

Synonyms

AHSG; alpha-2-HS-glycoprotein; BSP; fetuin-A; glycoprotein PP63; phosphorylated N-glycoprotein pp63; alpha 2 HS-glycoprotein alpha 2 (fetuin); 59 kDa bone sialic acid-containing protein; pp63; Aa2-066;

Gene ID

25373

mRNA Refseq

NM_012898

Protein Refseq

NP_037030

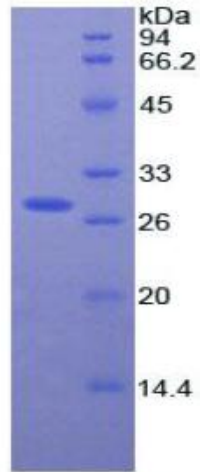
UniProt ID

P24090

 Tel: 1-631-559-9269 1-516-512-3133

 Email: info@creative-biomart.com  Fax: 1-631-938-8127

 45-1 Ramsey Road, Shirley, NY 11967, USA



15% SDS-PAGE

 Tel: 1-631-559-9269 1-516-512-3133

 Email: info@creative-biomart.com  Fax: 1-631-938-8127

 45-1 Ramsey Road, Shirley, NY 11967, USA