

## Recombinant Mouse Aif1 protein, hFc-tagged

Cat. No. Aif1-2433M Lot. No. (See product label)

### SPECIFICATION

|                         |  |
|-------------------------|--|
| <b>Product Overview</b> | Recombinant Mouse Aif1 protein(O70200)(2-147aa), fused with C-terminal hFc tag, was expressed in HEK293.   |
| <b>Species</b>          | Mouse  |
| <b>Source</b>           | HEK293   |
| <b>ProteinLength</b>    | 2-147aa  |
| <b>Tag</b>              | C-hFc  |
| <b>Form</b>             | If the delivery form is liquid, the default storage buffer is Tris/PBS-based buffer, 5%-50% glycerol. If the delivery form is lyophilized powder, the buffer before lyophilization is Tris/PBS-based buffer, 6% Trehalose, pH 8.0. |
| <b>Molecular Mass</b>   | 45.7 kDa   |
| <b>Purity</b>           | Greater than 90% as determined by SDS-PAGE.<br>Greater than 90% as determined by SEC-HPLC.   |
| <b>Storage</b>          | Store at -20°C/-80°C upon receipt, aliquoting is necessary for mutiple use. Avoid repeated freeze-thaw cycles.   |
| <b>Reconstitution</b>   | We recommend that this vial be briefly centrifuged prior to opening to bring the contents to the bottom. Please reconstitute protein in deionized sterile water to a   |

 Tel: 1-631-559-9269 1-516-512-3133

 Email: [info@creative-biomart.com](mailto:info@creative-biomart.com)  Fax: 1-631-938-8127

 45-1 Ramsey Road, Shirley, NY 11967, USA

concentration of 0.1-1.0 mg/mL. We recommend to add 5-50% of glycerol (final concentration) and aliquot for long-term storage at -20°C/-80°C.

**AA Sequence**  
 SQRDLQGGKAFGLLKAQQEERLEGINKQFLDDPKYSNDEDLPSKLEAFKVKYMEF  
 DLNGNGDIDIMSLKRMLEKLGVPKTHLELKRLIREVSSGSEETFSYSDFLRMMLGKR  
 SAILRMILMYEKNKEHKRPTGPPAKKAISELP

## GENE INFORMATION

**Gene Name** [Aif1 allograft inflammatory factor 1 \[ Mus musculus \]](#)

**Official Symbol** [Aif1](#)

**Synonyms** AIF1; allograft inflammatory factor 1; testis specific; ionized calcium binding adapter molecule 1; ionized calcium-binding adapter molecule 1; G1; Iba1; AIF-1; AI607846; D17H6S50E;

**Gene ID** [11629](#)

**mRNA Refseq** [NM\\_019467](#)

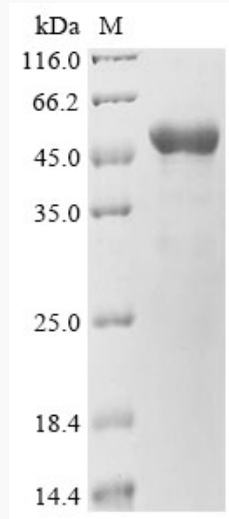
**Protein Refseq** [NP\\_062340](#)

 Tel: 1-631-559-9269 1-516-512-3133

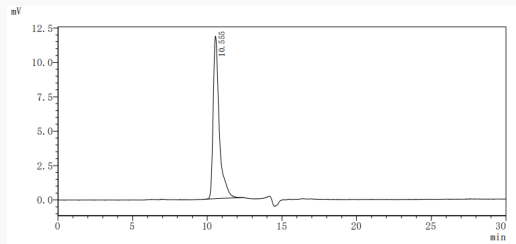
 Email: [info@creative-biomart.com](mailto:info@creative-biomart.com)  Fax: 1-631-938-8127

 45-1 Ramsey Road, Shirley, NY 11967, USA

**SDS-PAGE**



**SEC-HPLC**



 Tel: 1-631-559-9269 1-516-512-3133

 Email: [info@creative-biomart.com](mailto:info@creative-biomart.com)  Fax: 1-631-938-8127

 45-1 Ramsey Road, Shirley, NY 11967, USA