

Recombinant Mouse Alcam Protein, Tyr28-Lys527, C-His-Avi tagged, Biotinylated

Cat. No. Alcam-258M **Lot. No.** (See product label)

SPECIFICATION

Product Overview	Recombinant mouse ALCAM/CD166-C-His-Avi protein was developed from HEK293 and has a target region of C-His-Avi.
Species	Mouse
Source	HEK293
ProteinLength	Tyr28-Lys527
Description	Predicted to enable identical protein binding activity. Acts upstream of or within motor neuron axon guidance. Located in axon; external side of plasma membrane; and neuronal cell body. Is expressed in several structures, including alimentary system; central nervous system; genitourinary system; sensory organ; and vibrissa. Orthologous to human ALCAM (activated leukocyte cell adhesion molecule).
Conjugation/Label	Biotin
Form	Lyophilised
Endotoxin	Endotoxin level was found to be less than 0.1 ng/μg (1 EU/μg).
Notes	FOR RESEARCH USE ONLY (RUO).
Storage	The lyophilized protein is stable for at least 1 year from date of receipt at -20

 Tel: 1-631-559-9269 1-516-512-3133

 Email: info@creative-biomart.com  Fax: 1-631-938-8127

 45-1 Ramsey Road, Shirley, NY 11967, USA

centigrade.

Storage Buffer

Lyophilised from 0.2 µm filtered PBS solution pH 7.4. Upon receipt centrifuge vial to ensure maximal product extraction, recommended: 20 sec, 5K RPM

Conjugation

Biotin

GENE INFORMATION

Gene Name

[Alcam activated leukocyte cell adhesion molecule \[Mus musculus \]](#)

Official Symbol

[Alcam](#)

Synonyms

ALCAM; activated leukocyte cell adhesion molecule; CD166 antigen; BEN; SC1; MuSC; CD166; AI853494; DM-GRASP; MGC27910;

Gene ID

[11658](#)

mRNA Refseq

[NM_009655](#)

Protein Refseq

[NP_033785](#)

UniProt ID

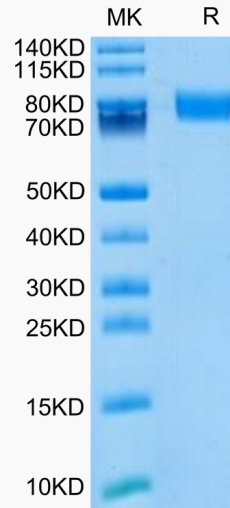
[O70136](#)

 Tel: 1-631-559-9269 1-516-512-3133

 Email: info@creative-biomart.com  Fax: 1-631-938-8127

 45-1 Ramsey Road, Shirley, NY 11967, USA

**Biotinylated Mouse
ALCAM on Tris-Bis
PAGE under reduced
condition. The purity
is greater than 95%.**



**The purity of
Biotinylated Mouse
ALCAM is greater
than 95% as
determined by SEC-
HPLC.**

 Tel: 1-631-559-9269 1-516-512-3133

 Email: info@creative-biomart.com  Fax: 1-631-938-8127

 45-1 Ramsey Road, Shirley, NY 11967, USA