

Recombinant Mouse Aldh1a1 protein, His & T7-tagged

Cat. No. Aldh1a1-1356M Lot. No. (See product label)

SPECIFICATION

Product Overview	Recombinant Mouse Aldh1a1 aa. (Met1~Arg326 (Accession# P24549) fused with N-terminal His & T7 tag was produced in E. coli cells.
Species	Mouse
Source	E.coli
ProteinLength	Met1~Arg326
Form	Freeze-dried powder
Molecular Mass	Predicted Molecular Mass: 39.0kDa
Endotoxin	<1.0EU per 1g (determined by the LAL method)
Purity	>90%
Characteristic	The isoelectric point is 6.8.
Applications	SDS-PAGE; WB; ELISA; IP.
Stability	The thermal stability is described by the loss rate. The loss rate was determined by accelerated thermal degradation test, that is, incubate the protein at 37°C for 48h, and no obvious degradation and precipitation were observed. The loss rate is less than 5% within the expiration date under appropriate storage condition.

 Tel: 1-631-559-9269 1-516-512-3133

 Email: info@creative-biomart.com  Fax: 1-631-938-8127

 45-1 Ramsey Road, Shirley, NY 11967, USA

Storage	Avoid repeated freeze/thaw cycles. Store at 2-8°C for one month. Aliquot and store at -80°C for 12 months.
Storage buffer	Supplied as lyophilized form in 20mM Tris, 150mM NaCl, pH8.0, containing 1mM EDTA, 1mM DTT, 0.01% sarcosyl, 5% trehalose, and preservative.
Reconstitution	Reconstitute in sterile ddH ₂ O.

GENE INFORMATION

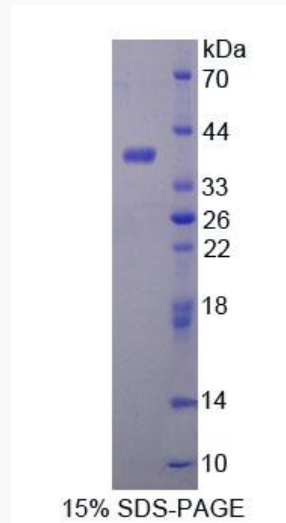
Gene Name	Aldh1a1 aldehyde dehydrogenase family 1, subfamily A1 [Mus musculus (house mouse)]
Official Symbol	Aldh1a1
Synonyms	Aldh1a1; aldehyde dehydrogenase family 1, subfamily A1; E1; Ahd2; Ahd-2; Aldh1; Raldh1; Aldh1a2; retinal dehydrogenase 1; ALDH-E1; ALHDII; RALDH 1; alcohol dehydrogenase family 1, subfamily A1; alcohol dehydrogenase family 1, subfamily A2; aldehyde dehydrogenase 1, liver cytosolic (class 1); aldehyde dehydrogenase family 1 member A1; aldehyde dehydrogenase, cytosolic
Gene ID	11668
mRNA Refseq	NM_013467.3
Protein Refseq	NP_038495.2
UniProt ID	P24549

 Tel: 1-631-559-9269 1-516-512-3133

 Email: info@creative-biomart.com  Fax: 1-631-938-8127

 45-1 Ramsey Road, Shirley, NY 11967, USA

SDS-PAGE



 Tel: 1-631-559-9269 1-516-512-3133

 Email: info@creative-biomart.com  Fax: 1-631-938-8127

 45-1 Ramsey Road, Shirley, NY 11967, USA