

Recombinant Rat Aldh2 protein, His&Myc-tagged

Cat. No. Aldh2-2422R **Lot. No.** (See product label)

SPECIFICATION

Product Overview	Recombinant Rat Aldh2 protein(P11884)(20-519aa), fused with N-terminal His tag and C-terminal Myc tag, was expressed in E.coli.
Species	Rat
Source	E.coli
ProteinLength	20-519aa
Form	If the delivery form is liquid, the default storage buffer is Tris/PBS-based buffer, 5%-50% glycerol. If the delivery form is lyophilized powder, the buffer before lyophilization is Tris/PBS-based buffer, 6% Trehalose, pH 8.0.
Molecular Mass	61.8 kDa
Purity	Greater than 90% as determined by SDS-PAGE.
Storage	Store at -20°C/-80°C upon receipt, aliquoting is necessary for mutiple use. Avoid repeated freeze-thaw cycles.
Reconstitution	We recommend that this vial be briefly centrifuged prior to opening to bring the contents to the bottom. Please reconstitute protein in deionized sterile water to a concentration of 0.1-1.0 mg/mL. We recommend to add 5-50% of glycerol (final concentration) and aliquot for long-term storage at -20°C/-80°C.

 Tel: 1-631-559-9269 1-516-512-3133

 Email: info@creative-biomart.com  Fax: 1-631-938-8127

 45-1 Ramsey Road, Shirley, NY 11967, USA

AA Sequence

SAAATSAVPAPNQQPEVFCNQIFINNEWHDVAVSKKTFPTVNPSTGEVICQVAEGNKE
 DVDKAVKAAQAAFQLGSPWRRMDASDRGRLLYRLADLIERDRTYLAALETLDNGKP
 YVISYLVLDLDMVLKCLRYAGWADKYHGKTIPIDGFFSYTRHEPVGVCQIIPWNF
 PLLMQAWKLGALATGNVVMKVAEQTPLTALYVANLIKEAGFPPGVVNIIVPGFGPT
 AGAAIASHEDVDKVAFTGSTEVGHLIQAAGSSNLKRVTLLEGGKSPNIIMSDADMD
 WAVEQAHFALFFNQGCCAGSRTFVQEDVYDEFVRSVARAKSRVVGPNPFDSTRT
 EQGPQVDETQFKKILGYIKSGQQEGAKLLCGGGAAADRGYFIQPTVFGDVKDGMTI
 AKEEIFGPVMQILKFKTIEEVGRANNSKYGLAAAVFTKDLKANYLSQALQAGTVWI
 NCYDVFGAQSPFGGYKMSGSGRELGEYGLQAYTEVKTVTVKVPQKNS

GENE INFORMATION

Gene Name [Aldh2 aldehyde dehydrogenase 2 family \(mitochondrial\) \[Rattus norvegicus \]](#)

Official Symbol [Aldh2](#)

Synonyms ALDH2; aldehyde dehydrogenase 2 family (mitochondrial); aldehyde dehydrogenase, mitochondrial; ALDH1; ALDH-E2; ALDH class 2; mitochondrial aldehyde dehydrogenase; aldehyde dehydrogenase 2, mitochondrial;

Gene ID [29539](#)

mRNA Refseq [NM_032416](#)

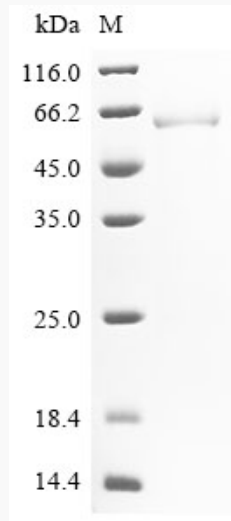
Protein Refseq [NP_115792](#)

 Tel: 1-631-559-9269 1-516-512-3133

 Email: info@creative-biomart.com  Fax: 1-631-938-8127

 45-1 Ramsey Road, Shirley, NY 11967, USA

SDS-PAGE



 Tel: 1-631-559-9269 1-516-512-3133

 Email: info@creative-biomart.com  Fax: 1-631-938-8127

 45-1 Ramsey Road, Shirley, NY 11967, USA