

Recombinant mouse Alox12 Protein, His-tagged

Cat. No. Alox12-021M **Lot. No.** (See product label)

SPECIFICATION

Product Overview	Recombinant mouse Alox12 protein (2-664) with a C-terminal His-tag was expressed in insect cells
Species	Mouse
Source	Insect Cells
ProteinLength	2-664
Description	This gene is from arachidonic acid. There are two main types of 12-LO, platelet-type and leukocyte-type, which share only 60% identity at the amino acid level and strongly differ in substrate specificity and enzyme kinetics. Leukocyte-type 12-LO has the ability to also produce 15-HpETE, however, platelet-type predominately forms 12-HpETE. 2 Epidermal-type 12(S)- and 12(R)-LO enzymes have also been characterized, which catalyze the synthesis of their respective stereospecific 12-HETE products.
Molecular Mass	76 kDa
Purity	80% estimated by SDS-PAGE
Unit Definition	One unit is defined as the amount of enzyme required to consume 1 nmol of oxygen per minute at 37 centigrade in 0.1 M Tris-HCl, pH 7.5, containing 5 mM EDTA, 0.03% polysorbate, and 100 μ M arachidonate.

 Tel: 1-631-559-9269 1-516-512-3133

 Email: info@creative-biomart.com  Fax: 1-631-938-8127

 45-1 Ramsey Road, Shirley, NY 11967, USA

Stability	≥ 1 year
Storage	-80 centigrade
Storage Buffer	50 mM sodium phosphate pH 7.2, 100 mM sodium chloride, 20 μ M FeCl ₂ , and 30% glycerol
Shipping	Dry ice in continental US, may vary elsewhere.

GENE INFORMATION

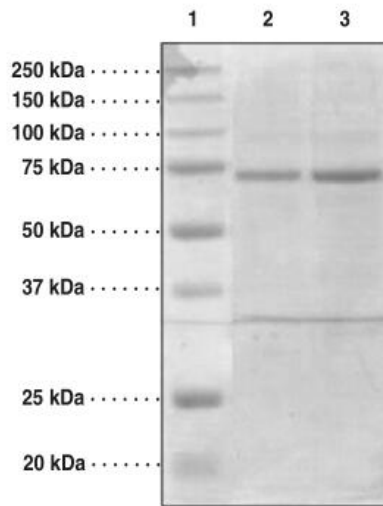
Gene Name	Alox12 arachidonate 12-lipoxygenase [Mus musculus (house mouse)]
Official Symbol	Alox12
Synonyms	Alox12; arachidonate 12-lipoxygenase; P-12LO; Alox12p; 9930022G08Rik; polyunsaturated fatty acid lipoxygenase ALOX12; 12S-LOX; 12S-lipoxygenase; arachidonate (12S)-lipoxygenase; arachidonate (15S)-lipoxygenase; arachidonate 12-lipoxygenase, 12S-type; arachidonate 15-lipoxygenase, 15S-type; linoleate 13S-lipoxygenase; lipoxin synthase 12-LO; platelet-type lipoxygenase 12; EC 1.13.11.31; EC 1.13.11.33
Gene ID	11684
mRNA Refseq	NM_001331118
Protein Refseq	NP_001318047
UniProt ID	P39655

 Tel: 1-631-559-9269 1-516-512-3133

 Email: info@creative-biomart.com  Fax: 1-631-938-8127

 45-1 Ramsey Road, Shirley, NY 11967, USA

**SDS-PAGE analysis
of Alox12**



Lane 1: MW Markers

Lane 2: Purified 12-LO (2 g)

Lane 3: Purified 12-LO (5 g)

 Tel: 1-631-559-9269 1-516-512-3133

 Email: info@creative-biomart.com  Fax: 1-631-938-8127

 45-1 Ramsey Road, Shirley, NY 11967, USA