

## Recombinant Rat Alpi protein(21-511aa), His-tagged

**Cat. No.** Alpi-654R    **Lot. No.** (See product label)

### SPECIFICATION

<b>Product Overview</b>	Recombinant Rat Alpi protein(P15693)(21-511aa), fused with N-terminal His tag, was expressed in HEK293.
<b>Species</b>	Rat
<b>Source</b>	HEK293
<b>ProteinLength</b>	21-511aa
<b>Form</b>	Lyophilized from a 0.2 µm filtered 20 mM Tris-HCl, 0.5 M NaCl, 6% Trehalose, pH 8.0
<b>Bio-activity</b>	Unit Definition: One unit is defined as the amount of enzyme required to cleave 1 nmol p-nitro-phenylphosphate(pNPP), in 1 minute at 37°C, pH10.0. The specific activity is >10370.37 U/mg.
<b>Molecular Mass</b>	55.9 kDa
<b>Endotoxin</b>	Less than 1.0 EU/ug as determined by LAL method.
<b>Purity</b>	Greater than 95% as determined by SDS-PAGE.
<b>Storage</b>	Store at -20°C/-80°C upon receipt, aliquoting is necessary for mutiple use. Avoid repeated freeze-thaw cycles.
<b>Reconstitution</b>	We recommend that this vial be briefly centrifuged prior to opening to bring the

 Tel: 1-631-559-9269    1-516-512-3133

 Email: [info@creative-biomart.com](mailto:info@creative-biomart.com)     Fax: 1-631-938-8127

 45-1 Ramsey Road, Shirley, NY 11967, USA

contents to the bottom. Please reconstitute protein in deionized sterile water to a concentration of 0.1-1.0 mg/mL. We recommend to add 5-50% of glycerol (final concentration) and aliquot for long-term storage at -20°C/-80°C.

**AA Sequence**

```
VIPVEEENPVFWNQKAKEALDVAKKLQPIQTSAKNLILFLGDGMGVPVTATRILKGQ
LGGHLPETPLAMDHFPFTALSKTYNVDRQVPDSAGTATAYLCGVKANYKTIGVSA
AARFNQCNSTFGNEVFSVMHRAKKAGKSVGVTTRVQHASPAGTYAHTVNRDWY
SDADMPSSALQEGCKDIATQLISNMDIDVILGGGRKFMFPKGTDPPEYPGDSDQSG
VRLDSRNLVEEWLAKYQGTRYVWNREQLMQASQDPAVTRLMGLFEPTMKYDVN
RNASADPSLAEMTEVAVRLLSRNPQGFYLFVEGGRIDQGHAGTAYLALTEAVMFD
SAIEKASQLTNEKDTLTLITADHSHVFAFGGYTLRGTSIFGLAPLNAQDGKSYTSILYG
NGPGYVLNSGNRPNVTDAESGDVNYKQAAVPLSSETHGGEDVAIFARGPQAHLV
HGVQEQNYIAHVMAFAGCLEPYTDCGLAPPADENRPTTPVQN
```

## GENE INFORMATION

**Gene Name** [Alpi alkaline phosphatase, intestinal \[ Rattus norvegicus \]](#)

**Official Symbol** [Alpi](#)

**Synonyms** ALPI; alkaline phosphatase, intestinal; intestinal-type alkaline phosphatase 1; IAP-1; IAP-I; intestinal alkaline phosphatase 1; intestinal alkaline phosphatase I IAP-I; Alkaline phosphatase 1, intestinal, defined by SSR; Alp1; S51097;

**Gene ID** [24197](#)

**mRNA Refseq** [NM\\_022665](#)

**Protein Refseq** [NP\\_073156](#)

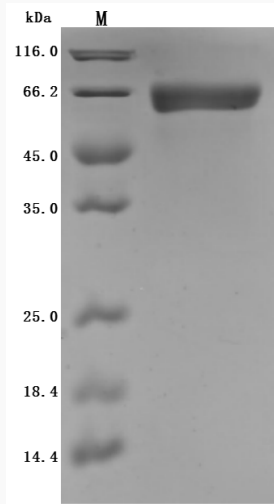
 Tel: 1-631-559-9269 1-516-512-3133

 Email: [info@creative-biomart.com](mailto:info@creative-biomart.com)  Fax: 1-631-938-8127

 45-1 Ramsey Road, Shirley, NY 11967, USA



SDS-PAGE



Tel: 1-631-559-9269 1-516-512-3133

Email: [info@creative-biomart.com](mailto:info@creative-biomart.com) Fax: 1-631-938-8127

45-1 Ramsey Road, Shirley, NY 11967, USA