

## Recombinant Mouse Amy2a5 protein, His & T7-tagged

Cat. No. Amy2a5-6979M Lot. No. (See product label)

### SPECIFICATION

<b>Product Overview</b>	Recombinant Mouse Amy2a5 aa. (Ser22~Ser257 (Accession # P00688)) fused with N-terminal His & T7 tag was produced in E. coli cells.
<b>Species</b>	Mouse
<b>Source</b>	E.coli
<b>ProteinLength</b>	Ser22~Ser257
<b>Form</b>	Freeze-dried powder
<b>Molecular Mass</b>	Predicted Molecular Mass: 30.3kDa
<b>Endotoxin</b>	<1.0EU per 1ug (determined by the LAL method)
<b>Purity</b>	>95%
<b>Characteristic</b>	The isoelectric point is 6.9.
<b>Applications</b>	SDS-PAGE; WB; ELISA; IP
<b>Stability</b>	The thermal stability is described by the loss rate. The loss rate was determined by accelerated thermal degradation test, that is, incubate the protein at 37°C for 48h, and no obvious degradation and precipitation were observed. The loss rate is less than 5% within the expiration date under appropriate storage condition.

 Tel: 1-631-559-9269 1-516-512-3133

 Email: [info@creative-biomart.com](mailto:info@creative-biomart.com)  Fax: 1-631-938-8127

 45-1 Ramsey Road, Shirley, NY 11967, USA

<b>Storage</b>	Avoid repeated freeze/thaw cycles. Store at 2-8°C for one month. Aliquot and store at -80°C for 12 months.
<b>Storage buffer</b>	Supplied as lyophilized form in PBS, pH7.4, containing 5% trehalose, 0.01% sarcosyl.
<b>Reconstitution</b>	Reconstitute in sterile PBS, pH7.2-pH7.4.

## GENE INFORMATION

<b>Gene Name</b>	<i>Amy2a5</i> amylase 2a5 [ <i>Mus musculus</i> (house mouse) ]
<b>Official Symbol</b>	<i>Amy2a5</i>
<b>Synonyms</b>	<i>Amy2a5</i> ; amylase 2a5; <i>Amy2</i> ; <i>Amy-2</i> ; <i>mAmy2-2</i> ; 1810008N23Rik; pancreatic alpha-amylase; 1,4-alpha-D-glucan glucanohydrolase; PA; amylase 2, pancreatic; amylase 2a5, pancreatic
<b>Gene ID</b>	109959
<b>mRNA Refseq</b>	NM_001042711.2
<b>Protein Refseq</b>	NP_001036176.1
<b>UniProt ID</b>	P00688

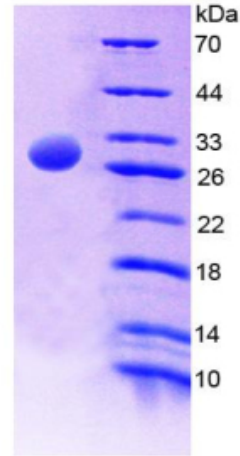
 Tel: 1-631-559-9269 1-516-512-3133

 Email: [info@creative-biomart.com](mailto:info@creative-biomart.com)  Fax: 1-631-938-8127

 45-1 Ramsey Road, Shirley, NY 11967, USA



SDS-PAGE



Tel: 1-631-559-9269 1-516-512-3133

Email: [info@creative-biomart.com](mailto:info@creative-biomart.com) Fax: 1-631-938-8127

45-1 Ramsey Road, Shirley, NY 11967, USA