

Recombinant Mouse Angpt1 protein, His-tagged

Cat. No. Angpt1-528M Lot. No. (See product label)

SPECIFICATION

Product Overview	Recombinant Mouse Angpt1 aa. (Arg35~Gln231) fused with N-terminal His tag was produced in E. coli cells.
Species	Mouse
Source	E.coli
ProteinLength	Arg35~Gln231
Description	This gene encodes a secreted glycoprotein that belongs to the angiotensin family of vascular growth factors. The encoded protein is a ligand in the vascular tyrosine kinase signaling pathway and regulates the formation and stabilization of blood vessels. This protein also functions in striated muscles by promoting proliferation, migration and differentiation of skeletal myoblasts and plays an essential role in the vascular response to tissue injury. Alternative splicing results in multiple transcript variants.
Form	Freeze-dried powder
Molecular Mass	23kDa as determined by SDS-PAGE reducing conditions
Endotoxin	<1.0EU per 1g (determined by the LAL method)
Purity	> 98%

 Tel: 1-631-559-9269 1-516-512-3133

 Email: info@creative-biomart.com  Fax: 1-631-938-8127

 45-1 Ramsey Road, Shirley, NY 11967, USA

Characteristic	The isoelectric point is 5.7.
Applications	Positive Control; Immunogen; SDS-PAGE; WB.
Stability	The thermal stability is described by the loss rate. The loss rate was determined by accelerated thermal degradation test, that is, incubate the protein at 37°C for 48h, and no obvious degradation and precipitation were observed. The loss rate is less than 5% within the expiration date under appropriate storage condition.
Storage	Avoid repeated freeze/thaw cycles. Store at 2-8°C for one month. Aliquot and store at -80°C for 12 months.
Storage buffer	PBS, pH7.4, containing 1mM DTT, 5% trehalose, 0.01% sarcosyl and Proclin300.
Reconstitution	Reconstitute in PBS (pH7.4) to a concentration of 0.1-1.0 mg/mL. Do not vortex.

GENE INFORMATION

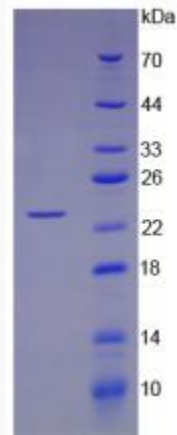
Gene Name	Angpt1 angiotensinogen 1 [Mus musculus (house mouse)]
Official Symbol	Angpt1
Synonyms	Angpt1; angiotensinogen 1; Ang1; Ang-1; 1110046O21Rik; angiotensinogen-1
Gene ID	11600
mRNA Refseq	NM_001286062.1
Protein Refseq	NP_001272991.1

 Tel: 1-631-559-9269 1-516-512-3133

 Email: info@creative-biomart.com  Fax: 1-631-938-8127

 45-1 Ramsey Road, Shirley, NY 11967, USA

SDS-PAGE



 Tel: 1-631-559-9269 1-516-512-3133

 Email: info@creative-biomart.com  Fax: 1-631-938-8127

 45-1 Ramsey Road, Shirley, NY 11967, USA