

## Active Recombinant Mouse Angpt2 protein, His-tagged

Cat. No. Angpt2-476M Lot. No. (See product label)

### SPECIFICATION

<b>Product Overview</b>	Recombinant Mouse Angpt2 protein(NP_031452)(Tyr 19 - Phe 496), fused to C-terminal His tag, was expressed in HEK293.
<b>Species</b>	Mouse
<b>Source</b>	HEK293
<b>ProteinLength</b>	Tyr 19 - Phe 496
<b>Form</b>	Lyophilized from 0.22 µm filtered solution in PBS, pH7.4. Normally trehalose is added as protectant before lyophilization.
<b>Bio-activity</b>	Immobilized Human TIE2, Fc Tag at 2 µg/mL (100 µL/well) can bind Mouse Angiopoietin-2, His Tag with a linear range of 2-39 ng/mL.
<b>Molecular Mass</b>	The protein has a calculated MW of 56.5 kDa. The protein migrates as 60-80 kDa under reducing (R) condition (SDS-PAGE) due to glycosylation.
<b>Endotoxin</b>	Less than 1.0 EU per µg by the LAL method.
<b>Purity</b>	>90% as determined by SDS-PAGE.
<b>Storage</b>	For long term storage, the product should be stored at lyophilized state at -20°C or lower. Please avoid repeated freeze-thaw cycles.

 Tel: 1-631-559-9269 1-516-512-3133

 Email: [info@creative-biomart.com](mailto:info@creative-biomart.com)  Fax: 1-631-938-8127

 45-1 Ramsey Road, Shirley, NY 11967, USA

This product is stable after storage at:  
-20°C to -70°C for 12 months in lyophilized state;  
-70°C for 3 months under sterile conditions after reconstitution.

**Reconstitution**

It is recommended that sterile water be added to the vial to prepare a stock solution of 0.2 ug/ul. Centrifuge the vial at 4°C before opening to recover the entire contents.

**GENE INFORMATION**

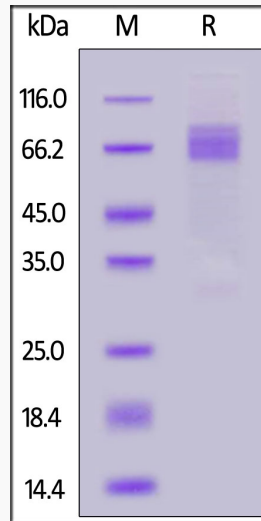
<b>Gene Name</b>	Angpt2 angiopoietin 2 [ Mus musculus ]
<b>Official Symbol</b>	Angpt2
<b>Synonyms</b>	Angpt2; angiopoietin 2; Ang2; Agpt2; Ang-2; angiopoietin-2
<b>Gene ID</b>	11601
<b>mRNA Refseq</b>	NM_007426
<b>Protein Refseq</b>	NP_031452
<b>UniProt ID</b>	O35608

 Tel: 1-631-559-9269 1-516-512-3133

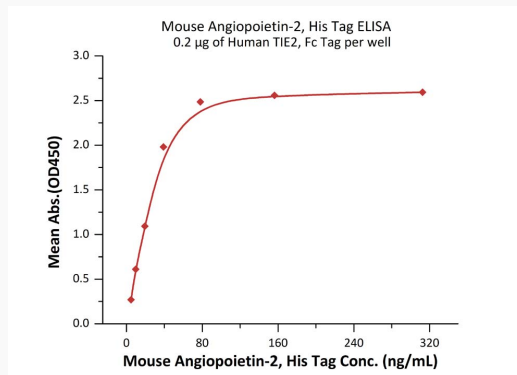
 Email: [info@creative-biomart.com](mailto:info@creative-biomart.com)  Fax: 1-631-938-8127

 45-1 Ramsey Road, Shirley, NY 11967, USA

**SDS-PAGE**



**ELISA**



Tel: 1-631-559-9269 1-516-512-3133

Email: [info@creative-biomart.com](mailto:info@creative-biomart.com) Fax: 1-631-938-8127

45-1 Ramsey Road, Shirley, NY 11967, USA