

Recombinant Mouse Angptl4 protein, His-tagged

Cat. No. Angptl4-6343M **Lot. No.** (See product label)

SPECIFICATION

Product Overview	Recombinant Mouse Angptl4 protein(Q9Z1P8)(24-410aa), fused with C-terminal His tag, was expressed in E.coli.
Species	Mouse
Source	E.coli
ProteinLength	24-410a.a.
Tag	His
Form	If the delivery form is liquid, the default storage buffer is Tris/PBS-based buffer, 5%-50% glycerol. If the delivery form is lyophilized powder, the buffer before lyophilization is Tris/PBS-based buffer, 6% Trehalose, pH 8.0.
Molecular Mass	44.4 kDa
Purity	Greater than 90% as determined by SDS-PAGE.
Storage	Store at -20°C/-80°C upon receipt, aliquoting is necessary for mutiple use. Avoid repeated freeze-thaw cycles.
Reconstitution	We recommend that this vial be briefly centrifuged prior to opening to bring the contents to the bottom. Please reconstitute protein in deionized sterile water to a concentration of 0.1-1.0 mg/mL. We recommend to add 5-50% of glycerol (final

 Tel: 1-631-559-9269 1-516-512-3133

 Email: info@creative-biomart.com  Fax: 1-631-938-8127

 45-1 Ramsey Road, Shirley, NY 11967, USA

concentration) and aliquot for long-term storage at -20°C/-80°C.

AA Sequence

QGRPAQPEPPRFASWDEMNLHAHGLLQLGHGLREHVERTRGQLGALERMAACG
 NACQGPKGKDAPFKDSEDRVPEGQTPETLQSLQTQLKAQNSKIQQLFQKVAQQQR
 YLSKQNLRIQNLQSQIDLLAPTHLDNGVDKTSRGKRLPKMTQLIGLTPNATHLHRPPR
 DCQELFQEGERHSGLFQIQPLGSPFLVNCEMTSDGGWTVIQRRLNGSVDFNQSW
 EAYKDGFGDPQGEFWLGLEKMHSITGNRGSQAVQLQDWDGNAKLLQFPIHLGGE
 DTAYSLQLTEPTANELGATNVSPNGLSLPFSTWDQDHLRGLDNC AKSLSGGWWF
 GTCSHSNLNGQYFHSIPRQRQERKKGIFWKTWKGRYYPLQATLLIQPMEATAAS

GENE INFORMATION

Gene Name [Angptl4](#) *angiotensin-like 4 [Mus musculus]*

Official Symbol [Angptl4](#)

Synonyms ANGPTL4; angiotensin-like 4; angiotensin-related protein 4; 425O18-1; secreted protein Bk89; angiotensin-like protein 4; fasting-induced adipose factor; fibrinogen/angiotensin-related protein; major histocompatibility complex region NG27; hepatic fibrinogen/angiotensin-related protein; Arp4; Bk89; Fiaf; Ng27; Pgar; Hfarp; Pgarg; Pp1158;

Gene ID [57875](#)

mRNA Refseq [NM_020581](#)

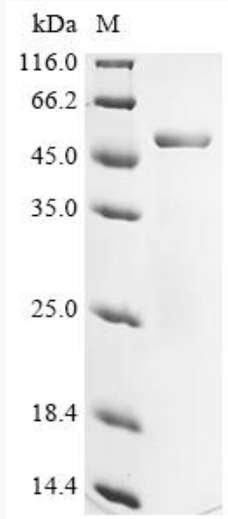
Protein Refseq [NP_065606](#)

 Tel: 1-631-559-9269 1-516-512-3133

 Email: info@creative-biomart.com  Fax: 1-631-938-8127

 45-1 Ramsey Road, Shirley, NY 11967, USA

SDS-PAGE



 Tel: 1-631-559-9269 1-516-512-3133

 Email: info@creative-biomart.com  Fax: 1-631-938-8127

 45-1 Ramsey Road, Shirley, NY 11967, USA