

Recombinant Rat Ankrd1 Protein, His/GST-tagged

Cat. No. Ankrd1-588R **Lot. No.** (See product label)

SPECIFICATION

Product Overview	Recombinant Rat Ankrd1(Arg5~Asn279) fused with His/GST tag at N-terminal was expressed in E. coli.
Species	Rat
Source	E.coli
ProteinLength	Arg5~Asn279
Form	PBS, pH7.4, containing 0.01% SKL, 1mM DTT, 5% Trehalose and Proclin300.
Molecular Mass	61.1kDa
Endotoxin	<1.0EU per 1g (determined by the LAL method)
Purity	> 92%
Applications	Positive Control; Immunogen; SDS-PAGE; WB. If bio-activity of the protein is needed, please check active protein.
Stability	The thermal stability is described by the loss rate. The loss rate was determined by accelerated thermal degradation test, that is, incubate the protein at 37 centigrade for 48h, and no obvious degradation and precipitation were observed. The loss rate is less than 5% within the expiration date under appropriate storage condition.

 Tel: 1-631-559-9269 1-516-512-3133

 Email: info@creative-biomart.com  Fax: 1-631-938-8127

 45-1 Ramsey Road, Shirley, NY 11967, USA

Storage Avoid repeated freeze/thaw cycles. Store at 2-8 centigrade for one month. Aliquot and store at -80 centigrade for 12 months.

Reconstitution Reconstitute in PBS or others.

GENE INFORMATION

Gene Name [Ankrd1 ankyrin repeat domain 1 \[Rattus norvegicus \]](#)

Official Symbol [Ankrd1](#)

Synonyms ANKRD1; ankyrin repeat domain 1; ankyrin repeat domain-containing protein 1; ankyrin-like repeat protein; muscle ankyrin repeat protein; cardiac ankyrin repeat protein; cardiac adriamycin-responsive protein; cardiac responsive adriamycin protein; ankyrin repeat domain 1 (cardiac muscle); Alrp; Carp; Crap; MARP;

Gene ID [27064](#)

mRNA Refseq [NM_013220](#)

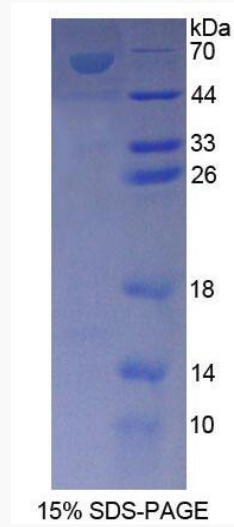
Protein Refseq [NP_037352](#)

UniProt ID [Q8R560](#)

 Tel: 1-631-559-9269 1-516-512-3133

 Email: info@creative-biomart.com  Fax: 1-631-938-8127

 45-1 Ramsey Road, Shirley, NY 11967, USA



Tel: 1-631-559-9269 1-516-512-3133

Email: info@creative-biomart.com Fax: 1-631-938-8127

45-1 Ramsey Road, Shirley, NY 11967, USA