

## Recombinant Mouse Anp32a protein, His & GST-tagged

**Cat. No.** Anp32a-1697M    **Lot. No.** (See product label)

### SPECIFICATION

<b>Product Overview</b>	Recombinant Mouse Anp32a aa. (Glu2-Asp247 (Accession # O35381)) fused with N-terminal His & GST tag was produced in E. coli cells.
<b>Species</b>	Mouse
<b>Source</b>	E.coli
<b>ProteinLength</b>	Glu2-Asp247
<b>Form</b>	Freeze-dried powder
<b>Molecular Mass</b>	Predicted Molecular Mass: 55.2kDa
<b>Endotoxin</b>	<1.0EU per 1ug (determined by the LAL method)
<b>Purity</b>	>95%
<b>Applications</b>	SDS-PAGE; WB; ELISA; IP.
<b>Stability</b>	The thermal stability is described by the loss rate. The loss rate was determined by accelerated thermal degradation test, that is, incubate the protein at 37°C for 48h, and no obvious degradation and precipitation were observed. The loss rate is less than 5% within the expiration date under appropriate storage condition.
<b>Storage</b>	Avoid repeated freeze/thaw cycles. Store at 2-8°C for one month. Aliquot and store at

 Tel: 1-631-559-9269    1-516-512-3133

 Email: [info@creative-biomart.com](mailto:info@creative-biomart.com)     Fax: 1-631-938-8127

 45-1 Ramsey Road, Shirley, NY 11967, USA

-80°C for 12 months.

**Storage buffer** Supplied as lyophilized form in PBS, pH7.4, containing 5% sucrose, 0.01% sarcosyl.

**Reconstitution** Reconstitute in sterile PBS, pH7.2-pH7.4.

**Isoelectric Point** 4.4

## GENE INFORMATION

**Gene Name** [Anp32a acidic \(leucine-rich\) nuclear phosphoprotein 32 family, member A \[ Mus musculus \(house mouse\) \]](#)

**Official Symbol** [Anp32a](#)

**Synonyms** Anp32a; acidic (leucine-rich) nuclear phosphoprotein 32 family, member A; LANP; pp32; Anp32; PHAP1; I1PP2A; W91701; acidic leucine-rich nuclear phosphoprotein 32 family member A; acidic nuclear phosphoprotein 32; acidic nuclear phosphoprotein pp32; leucine-rich acidic nuclear protein; potent heat-stable protein phosphatase 2A inhibitor I1PP2A; vacidic (leucine-rich) nuclear phosphoprotein 32 family, member A

**Gene ID** [11737](#)

**mRNA Refseq** [NM\\_009672.3](#)

**Protein Refseq** [NP\\_033802.2](#)

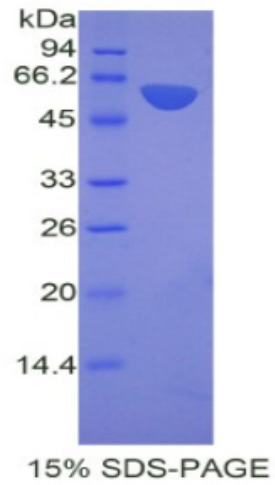
**UniProt ID** [O35381](#)

 Tel: 1-631-559-9269 1-516-512-3133

 Email: [info@creative-biomart.com](mailto:info@creative-biomart.com)  Fax: 1-631-938-8127

 45-1 Ramsey Road, Shirley, NY 11967, USA

**SDS-PAGE**



 Tel: 1-631-559-9269 1-516-512-3133

 Email: [info@creative-biomart.com](mailto:info@creative-biomart.com)  Fax: 1-631-938-8127

 45-1 Ramsey Road, Shirley, NY 11967, USA