

Active Recombinant Full Length Mouse Anpep Protein, His-tagged

Cat. No. Anpep-05HFL **Lot. No.** (See product label)

SPECIFICATION

Product Overview	Recombinant mouse Anpep, fused to His-tag at C terminus, was expressed in insect cell and purified by using conventional chromatography techniques.
Species	Mouse
Source	Insect Cells
ProteinLength	1-966 aa
Description	Enables metallopeptidase activity. Involved in angiotensin maturation. Is active in external side of plasma membrane. Is expressed in several structures, including alimentary system; brain; genitourinary system; liver; and sensory organ. Orthologous to human ANPEP (alanyl aminopeptidase, membrane).
Form	Liquid
Molecular Mass	107.5 kDa (943aa)
Bio-activity	Specific activity is > 4,000 pmol/min/μg, and is defined as the amount of enzyme that hydrolyze 1pmole of H-Ala-AMC to Alanine and AMC per minute at pH7.5 at 25 centigrade.
Application	SDS-PAGE, Enzyme Activity

 Tel: 1-631-559-9269 1-516-512-3133

 Email: info@creative-biomart.com  Fax: 1-631-938-8127

 45-1 Ramsey Road, Shirley, NY 11967, USA

Endotoxin	< 1 EU/μg of protein (determined by LAL method)
Purity	> 95% by SDS-PAGE
Storage	Can be stored at +2 to +8 centigrade for 1 week. For long term storage, aliquot and store at -20 to -80 centigrade. Avoid repeated freezing and thawing cycles.
Storage Buffer	Phosphate-Buffered Saline (pH 7.4) containing 10% glycerol
Concentration	0.5 mg/mL (determined by absorbance at 280nm)
Reference	1. Azimi A., et al. (2017) Cell Death Dis. 8:e3029.

GENE INFORMATION

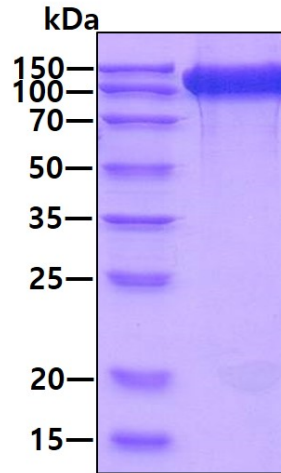
Gene Name	Anpep alanyl aminopeptidase, membrane [<i>Mus musculus</i> (house mouse)]
Official Symbol	Anpep
Synonyms	Anpep; alanyl aminopeptidase, membrane; Apn; AP-M; AP-N; Cd13; P150; aminopeptidase N; alanyl (membrane) aminopeptidase; alanyl aminopeptidase; aminopeptidase M; aminopeptidase N/CD13; membrane protein p161; microsomal aminopeptidase; EC 3.4.11.2
Gene ID	16790
mRNA Refseq	NM_008486
Protein Refseq	NP_032512
UniProt ID	P97449

 Tel: 1-631-559-9269 1-516-512-3133

 Email: info@creative-biomart.com  Fax: 1-631-938-8127

 45-1 Ramsey Road, Shirley, NY 11967, USA

SDS-PAGE



3 μ g by SDS-PAGE under reducing condition and visualized by coomassie blue stain.

 Tel: 1-631-559-9269 1-516-512-3133

 Email: info@creative-biomart.com  Fax: 1-631-938-8127

 45-1 Ramsey Road, Shirley, NY 11967, USA