

Active Recombinant Mouse Anthrax Toxin Receptor 2, His-tagged

Cat. No. Antxr2-558M **Lot. No.** (See product label)

SPECIFICATION

Product Overview	Recombinant Mouse Antxr2 protein was expressed in Murine myeloma cell line with a C-terminal 6-His tag. Gly26-Gly318.
Species	Mouse
Source	Mammalian Cells
Protein Length	26-318 a.a.
Description	Antxr2 is a widely expressed anthrax toxin receptor (ATR) family protein. Antxr2 is a ~55 kDa protein that contains a 31 amino acid (aa) signal sequence, a 287 aa extracellular domain (ECD), a 21 aa transmembrane sequence, and a 148 aa cytoplasmic domain. Unlike human Antxr2 which has four isoforms, only one sequence has been reported for mouse Antxr2. The main functional domain of Antxr2 is an extracellular integrin-like von Willebrand factor type A (VWA) domain with a metal ion dependent adhesion site (MIDAS), through which it adheres selectively to collagen type IV and laminin.
Form	Lyophilized from a 0.2 µm filtered solution in PBS with BSA as a carrier protein.
N-terminal Sequence	Gly26
Molecular Weight	32 kDa

 Tel: 1-631-559-9269 1-516-512-3133

 Email: info@creative-biomart.com  Fax: 1-631-938-8127

 45-1 Ramsey Road, Shirley, NY 11967, USA

Activity	Measured by its ability to bind anthrax protective antigen (PA) in a functional ELISA. Immobilized PA at 1.5 µg/mL (100 µL/well) can bind rmCMG2 with a linear range of 0.08-5.0 µg/mL.
Endotoxin Level	< 1.0 EU per 1 µg of the protein by the LAL method.
SDS-PAGE	32-35 kDa, reducing conditions.
Purity	> 95%, by SDS-PAGE under reducing conditions and visualized by silver stain.
Reconstitution	100 µg/mL in sterile PBS.
Storage	Use a manual defrost freezer and avoid repeated freeze-thaw cycles. 12 months from date of receipt, -20 to -70°C as supplied. 1 month, 2 to 8°C under sterile conditions after reconstitution. 3 months, -20 to -70°C under sterile conditions after reconstitution.

GENE INFORMATION

Gene Name	Antxr2 anthrax toxin receptor 2 [Mus musculus]
Official Symbol	Antxr2
Synonyms	Antxr2; anthrax toxin receptor 2; CMG2; CMG-2; cl-35; AW561899; 2310046B19Rik
Gene ID	71914
mRNA Refseq	NM_133738
Protein Refseq	NP_598499

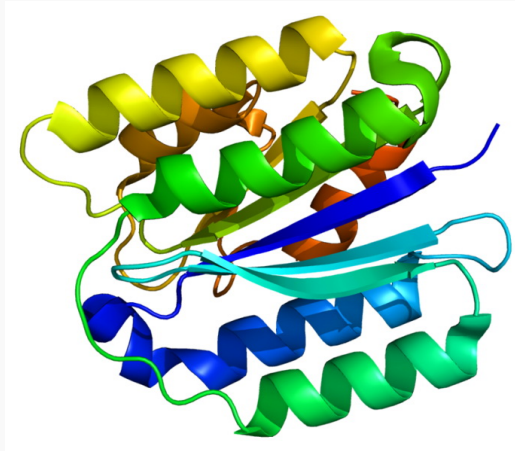
 Tel: 1-631-559-9269 1-516-512-3133

 Email: info@creative-biomart.com  Fax: 1-631-938-8127

 45-1 Ramsey Road, Shirley, NY 11967, USA

UniProt ID	Q3TCL6
Chromosome Location	5 E3; 5
Function	metal ion binding;receptor activity

PDB rendering
based on 1sht.



 Tel: 1-631-559-9269 1-516-512-3133

 Email: info@creative-biomart.com  Fax: 1-631-938-8127

 45-1 Ramsey Road, Shirley, NY 11967, USA