

## Recombinant Mouse Anxa1 protein, His-tagged

**Cat. No.** Anxa1-4728M    **Lot. No.** (See product label)

### SPECIFICATION

<b>Product Overview</b>	Recombinant Mouse Anxa1 protein(P10107)(2-346 aa), fused with N-terminal His tag, was expressed in Yeast.
<b>Species</b>	Mouse
<b>Source</b>	Yeast
<b>ProteinLength</b>	2-346 aa
<b>Form</b>	For liquid formulations, the standard storage buffer consists of a Tris or PBS based solution supplemented with 5-50% glycerol. When provided as lyophilized powder, the product undergoes freeze-drying from a Tris- or PBS-based formulation containing 6% trehalose, adjusted to pH 8.0 prior to the lyophilization process.
<b>Molecular Mass</b>	40.6kDa
<b>AASequence</b>	AMVSEFLKQARFLENQEYVQAVKSYKGGPGSAVSPYPSFNVSSDVAALHKAIMV KGVDEATIIDILTKRTNAQRQQIKAAYLQENGKPLDEVLRKALTGHLEEVVLAMLKTP AQFDADELRGAMKGLGTDEDTLIEILTTRSNEQIREINRVYREELKRDLAKDITSDTSG DFRKALLALAKGDRQCQLSVNQDLADTDARALYEAGERRKGTDVNVFTTILTSRSPF HLRRVFQNYGKYSQHDMNKALDLELKGDIKCLTTIVKCATSTPAFFAEKLYEAMKG AGTRHKALIRIMVSRSEIDMNEIKVFYQKKYGISLCQAILDETKGDYKILVALCGGN
<b>Purity</b>	Greater than 90% as determined by SDS-PAGE.

 Tel: 1-631-559-9269    1-516-512-3133

 Email: [info@creative-biomart.com](mailto:info@creative-biomart.com)     Fax: 1-631-938-8127

 45-1 Ramsey Road, Shirley, NY 11967, USA

**Storage** Store at -20°C/-80°C upon receipt, aliquoting is necessary for mutiple use. Avoid repeated freeze-thaw cycles.

**Reconstitution** Please reconstitute protein indeionized sterile water to a concentration of 0.1-1.0 mg/mL. Aliquot for long-term storage at -80°C.

## GENE INFORMATION

**Gene Name** [Anxa1 annexin A1 \[ Mus musculus \]](#)

**Official Symbol** [Anxa1](#)

**Synonyms** ANXA1; annexin A1; p35; annexin I; annexin-1; calpactin-2; calpactin II; lipocortin 1; lipocortin I; chromobindin-9; phospholipase A2 inhibitory protein; Lpc1; Anx-1; Lpc-1; Anx-A1; C430014K04Rik;

**Gene ID** [16952](#)

**mRNA Refseq** [NM\\_010730](#)

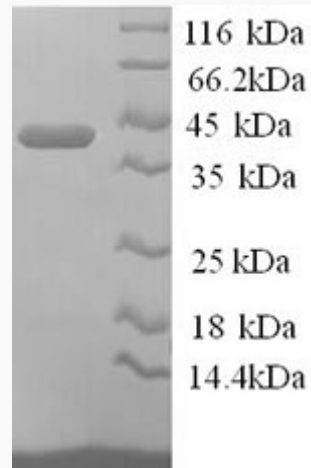
**Protein Refseq** [NP\\_034860](#)

 Tel: 1-631-559-9269 1-516-512-3133

 Email: [info@creative-biomart.com](mailto:info@creative-biomart.com)  Fax: 1-631-938-8127

 45-1 Ramsey Road, Shirley, NY 11967, USA

**SDS-PAGE**



 Tel: 1-631-559-9269 1-516-512-3133

 Email: [info@creative-biomart.com](mailto:info@creative-biomart.com)  Fax: 1-631-938-8127

 45-1 Ramsey Road, Shirley, NY 11967, USA