

## Recombinant Mouse Anxa2 protein, His-tagged

Cat. No. Anxa2-4522M Lot. No. (See product label)

### SPECIFICATION

<b>Product Overview</b>	Recombinant Mouse Anxa2 protein(P07356)(2-339aa), fused with C-terminal His tag, was expressed in Yeast.
<b>Species</b>	Mouse
<b>Source</b>	Yeast
<b>ProteinLength</b>	2-339aa
<b>Tag</b>	C-His
<b>Form</b>	If the delivery form is liquid, the default storage buffer is Tris/PBS-based buffer, 5%-50% glycerol. If the delivery form is lyophilized powder, the buffer before lyophilization is Tris/PBS-based buffer, 6% Trehalose, pH 8.0.
<b>Molecular Mass</b>	40.0 kDa
<b>Purity</b>	Greater than 90% as determined by SDS-PAGE.
<b>Storage</b>	Store at -20°C/-80°C upon receipt, aliquoting is necessary for mutiple use. Avoid repeated freeze-thaw cycles.
<b>Reconstitution</b>	We recommend that this vial be briefly centrifuged prior to opening to bring the contents to the bottom. Please reconstitute protein in deionized sterile water to a concentration of 0.1-1.0 mg/mL. We recommend to add 5-50% of glycerol (final

 Tel: 1-631-559-9269 1-516-512-3133

 Email: [info@creative-biomart.com](mailto:info@creative-biomart.com)  Fax: 1-631-938-8127

 45-1 Ramsey Road, Shirley, NY 11967, USA

concentration) and aliquot for long-term storage at -20°C/-80°C.

**AA Sequence**

STVHEILCKLSLEGDHSTPPSAYGSVKPYTNFDAERDALNIETAVKTKGVDEVTIVNIL  
 TNRSNVQRQDIAFAYQRRTKKELPSALKSALSGHLETVILGLLKTPAQYDASELKAS  
 MKGLGTDEDSLIEIICSRTNQELQEINRVYKEMYKTDLEKDIISDTSGDFRKLMMVALAK  
 GRRRAEDGVIDYELIDQDARELYDAGVKKRGTDVPKWISIMTERSVCVHLQKVFERYK  
 SYSPYDMLSEIKKEVKGDLENAFLNLVQCIQNKPLYFADRLYDSMKGKGTDRDKVLIRI  
 MVSRSSEVDMLKIRSEFKRKYGKSLYYYIQQDTKGDYQKALLYLCGGDD

## GENE INFORMATION

**Gene Name** [Anxa2 annexin A2 \[ Mus musculus \]](#)

**Official Symbol** [Anxa2](#)

**Synonyms**

ANXA2; annexin A2; p36; PAP-IV; annexin-2; protein I; annexin II; lipocortin II;  
 chromobindin 8; chromobindin-8; 33-kDa calcimedlin; 36-kDa calelectrin; calpactin I  
 heavy chain; calpactin-1 heavy chain; placental anticoagulant protein IV; 33kDa  
 lymphocyte Ca<sup>2+</sup> - binding protein; 33-kDa lymphocyte Ca<sup>2+</sup> Cal1h; AW215814;

**Gene ID** [12306](#)

**mRNA Refseq** [NM\\_007585](#)

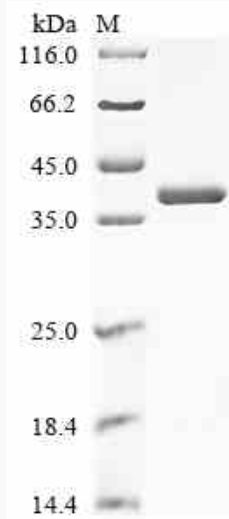
**Protein Refseq** [NP\\_031611](#)

 Tel: 1-631-559-9269 1-516-512-3133

 Email: [info@creative-biomart.com](mailto:info@creative-biomart.com)  Fax: 1-631-938-8127

 45-1 Ramsey Road, Shirley, NY 11967, USA

**SDS-PAGE**



 Tel: 1-631-559-9269 1-516-512-3133

 Email: [info@creative-biomart.com](mailto:info@creative-biomart.com)  Fax: 1-631-938-8127

 45-1 Ramsey Road, Shirley, NY 11967, USA