

Recombinant Mouse Anxa2 protein, His&Myc-tagged

Cat. No. Anxa2-4544M Lot. No. (See product label)

SPECIFICATION

Product Overview	Recombinant Mouse Anxa2 protein(P07356)(2-339aa), fused with N-terminal His tag and C-terminal Myc tag, was expressed in E.coli.
Species	Mouse
Source	E.coli
ProteinLength	2-339aa
Form	If the delivery form is liquid, the default storage buffer is Tris/PBS-based buffer, 5%-50% glycerol. If the delivery form is lyophilized powder, the buffer before lyophilization is Tris/PBS-based buffer, 6% Trehalose, pH 8.0.
Molecular Mass	46.0 kDa
Purity	Greater than 90% as determined by SDS-PAGE.
Storage	Store at -20°C/-80°C upon receipt, aliquoting is necessary for mutiple use. Avoid repeated freeze-thaw cycles.
Reconstitution	We recommend that this vial be briefly centrifuged prior to opening to bring the contents to the bottom. Please reconstitute protein in deionized sterile water to a concentration of 0.1-1.0 mg/mL. We recommend to add 5-50% of glycerol (final concentration) and aliquot for long-term storage at -20°C/-80°C.

 Tel: 1-631-559-9269 1-516-512-3133

 Email: info@creative-biomart.com  Fax: 1-631-938-8127

 45-1 Ramsey Road, Shirley, NY 11967, USA

AA Sequence

STVHEILCKLSLEGDHSTPPSAYGSVKPYTNFDAERDALNIETAVKTKGVDEVTIVNIL
 TNRSNVQRQDIAFAYQRRTKKELPSALKSALSGHLETVILGLLKTPAQYDASELKAS
 MKGLGTDEDSLIEIICSRTNQLQEINRVYKEMYKTDLEKDIISDTSGDFRKLMMVALAK
 GRRRAEDGSVIDYELIDQDARELYDAGVKKRGTDVPKWISIMTERSVCVHLQKVFERYK
 SYSPYDMLESIKKEVKGDLENAFLNLVQCIQNKPLYFADRLYDSMKGKGTDRDKVLIRI
 MVSRSSEVDMLKIRSEFKRKYGKSLYYYIQQDTKGDYQKALLYLCGGDD

GENE INFORMATION

Gene Name [Anxa2 annexin A2 \[Mus musculus \]](#)

Official Symbol [Anxa2](#)

Synonyms

ANXA2; annexin A2; p36; PAP-IV; annexin-2; protein I; annexin II; lipocortin II;
 chromobindin 8; chromobindin-8; 33-kDa calcimedlin; 36-kDa calelectrin; calpactin I
 heavy chain; calpactin-1 heavy chain; placental anticoagulant protein IV; 33kDa
 lymphocyte Ca²⁺ - binding protein; 33-kDa lymphocyte Ca²⁺ Cal1h; AW215814;

Gene ID [12306](#)

mRNA Refseq [NM_007585](#)

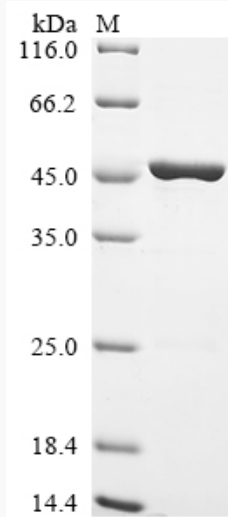
Protein Refseq [NP_031611](#)

 Tel: 1-631-559-9269 1-516-512-3133

 Email: info@creative-biomart.com  Fax: 1-631-938-8127

 45-1 Ramsey Road, Shirley, NY 11967, USA

SDS-PAGE



 Tel: 1-631-559-9269 1-516-512-3133

 Email: info@creative-biomart.com  Fax: 1-631-938-8127

 45-1 Ramsey Road, Shirley, NY 11967, USA