

## Recombinant Mouse Apc protein, His&Myc-tagged

**Cat. No.** Apc-3633M    **Lot. No.** (See product label)

### SPECIFICATION

<b>Product Overview</b>	Recombinant Mouse Apc protein(Q61315)(958-1335aa), fused with N-terminal His tag and C-terminal Myc tag, was expressed in E.coli.
<b>Species</b>	Mouse
<b>Source</b>	E.coli
<b>ProteinLength</b>	958-1335a.a.
<b>Tag</b>	His&Myc
<b>Form</b>	If the delivery form is liquid, the default storage buffer is Tris/PBS-based buffer, 5%-50% glycerol. If the delivery form is lyophilized powder, the buffer before lyophilization is Tris/PBS-based buffer, 6% Trehalose, pH 8.0.
<b>Molecular Mass</b>	49.9 kDa
<b>Purity</b>	Greater than 85% as determined by SDS-PAGE.
<b>Storage</b>	Store at -20°C/-80°C upon receipt, aliquoting is necessary for mutiple use. Avoid repeated freeze-thaw cycles.
<b>Reconstitution</b>	We recommend that this vial be briefly centrifuged prior to opening to bring the contents to the bottom. Please reconstitute protein in deionized sterile water to a concentration of 0.1-1.0 mg/mL.We recommend to add 5-50% of glycerol (final

 Tel: 1-631-559-9269    1-516-512-3133

 Email: [info@creative-biomart.com](mailto:info@creative-biomart.com)     Fax: 1-631-938-8127

 45-1 Ramsey Road, Shirley, NY 11967, USA

concentration) and aliquot for long-term storage at -20°C/-80°C.

**AA Sequence**

SNDSLNSVTSSDGYGKRGQMKPSVESYSEDDESKFCSYGQYPADLAHKIHSANHM  
 DDNDGELDTPINYSKYSDEQLNSGRQSPSQNERWARPKHVIEDEIKQNEQRQARS  
 QNTSYPVYSENTDDKHLKFQPHFGQQECVSPYRSRGTSGSETNRMGSSHAINQNV  
 NQSLCQEDDYEDDKPTNYSERYSEEEQHEEEEEERPTNYSIKYNEEKHHVDQPIDYS  
 LKYATDISSSQKPSFSSKNSSAQSTKPEHLSPSENTAVPPSNAKRQNQLRPSSAQ  
 RNGQTQKGTTCVPSINQETIQTYCVEDTPICFSRCSLSSLSSADDEIGCDQTTQE  
 ADSANTLQTAEVKENDVTRSAEDPATEVPAVSQNARAKPSRL

## GENE INFORMATION

**Gene Name** [Apc adenomatosis polyposis coli \[ Mus musculus \]](#)

**Official Symbol** [Apc](#)

**Synonyms** APC; adenomatosis polyposis coli; adenomatous polyposis coli protein; multiple intestinal neoplasia; CC1; Min; mAPC; AI047805; AU020952; AW124434;

**Gene ID** [11789](#)

**mRNA Refseq** [NM\\_007462](#)

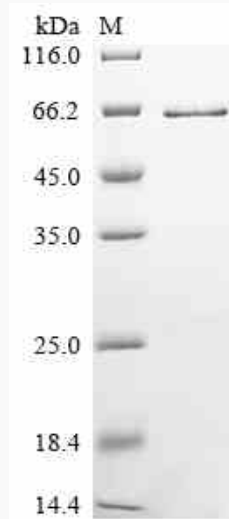
**Protein Refseq** [NP\\_031488](#)

 Tel: 1-631-559-9269 1-516-512-3133

 Email: [info@creative-biomart.com](mailto:info@creative-biomart.com)  Fax: 1-631-938-8127

 45-1 Ramsey Road, Shirley, NY 11967, USA

**SDS-PAGE**



 Tel: 1-631-559-9269 1-516-512-3133

 Email: [info@creative-biomart.com](mailto:info@creative-biomart.com)  Fax: 1-631-938-8127

 45-1 Ramsey Road, Shirley, NY 11967, USA