

Recombinant Mouse Apcs Protein (Gln21-Asp224), C-His tagged

Cat. No. Apcs-6768M **Lot. No.** (See product label)

SPECIFICATION

Product Overview	Recombinant mouse Apcs (Gln21-Asp224) fused with the C-terminal His tag was expressed in mammalian cells.
Species	Mouse
Source	Mammalian Cells
ProteinLength	Gln21-Asp224
Description	Predicted to enable several functions, including complement component C1q complex binding activity; low-density lipoprotein particle binding activity; and virion binding activity. Predicted to be involved in several processes, including complement activation, classical pathway; modulation by host of viral process; and negative regulation of monocyte differentiation. Predicted to be located in extracellular region. Predicted to be part of protein-containing complex. Predicted to be active in extracellular space. Is expressed in liver. Human ortholog (s) of this gene implicated in amyloidosis. Orthologous to human APCS (amyloid P component, serum).
Form	Lyophilized powder/frozen liquid
Molecular Mass	22.44 kDa
Purity	> 90 % as determined by SDS-PAGE

 Tel: 1-631-559-9269 1-516-512-3133

 Email: info@creative-biomart.com  Fax: 1-631-938-8127

 45-1 Ramsey Road, Shirley, NY 11967, USA

Notes	For research use only.
Storage	Use a manual defrost freezer and avoid repeated freeze thaw cycles. Store at 2 to 8 centigrade for one week. Store at -20 to -80 centigrade for twelve months from the date of receipt.
Storage Buffer	Supplied as solution form in PBS or lyophilized from PBS.
Reconstitution	Reconstitute in sterile water for a stock solution.
Shipping	They are shipped out with dry ice/blue ice unless customers require otherwise.
GENE INFORMATION	
Gene Name	Apcs amyloid P component, serum [Mus musculus (house mouse)]
Official Symbol	Apcs
Synonyms	APCS; amyloid P component, serum; serum amyloid P-component; 9.5S alpha 1 glycoprotein; MGC88159; pentaxin related; PTX2; SAP; pentaxin-related; 9.5S alpha-1-glycoprotein;
Gene ID	20219
mRNA Refseq	NM_011318
Protein Refseq	NP_035448
UniProt ID	P12246

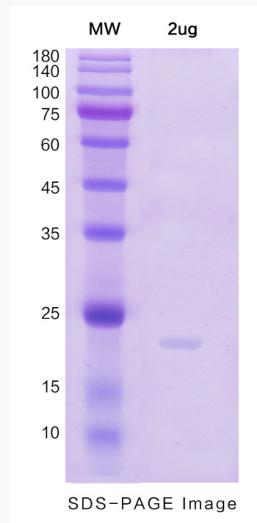
 Tel: 1-631-559-9269 1-516-512-3133

 Email: info@creative-biomart.com  Fax: 1-631-938-8127

 45-1 Ramsey Road, Shirley, NY 11967, USA



SDS-PAGE



Tel: 1-631-559-9269 1-516-512-3133

Email: info@creative-biomart.com Fax: 1-631-938-8127

45-1 Ramsey Road, Shirley, NY 11967, USA