

Recombinant Mouse ApoA1 protein, His-tagged

Cat. No. ApoA1-753M **Lot. No.** (See product label)

SPECIFICATION

Product Overview	Recombinant Mouse ApoA1 protein(Q00623)(19-264aa), fused with C-terminal His tag, was expressed in E.coli.
Species	Mouse
Source	E.coli
ProteinLength	19-264aa
Form	If the delivery form is liquid, the default storage buffer is Tris/PBS-based buffer, 5%-50% glycerol. If the delivery form is lyophilized powder, the buffer before lyophilization is Tris/PBS-based buffer, 6% Trehalose, pH 8.0.
Molecular Mass	35.7 kDa
Purity	Greater than 90% as determined by SDS-PAGE.
Storage	Store at -20°C/-80°C upon receipt, aliquoting is necessary for mutiple use. Avoid repeated freeze-thaw cycles.
Reconstitution	We recommend that this vial be briefly centrifuged prior to opening to bring the contents to the bottom. Please reconstitute protein in deionized sterile water to a concentration of 0.1-1.0 mg/mL. We recommend to add 5-50% of glycerol (final concentration) and aliquot for long-term storage at -20°C/-80°C.

 Tel: 1-631-559-9269 1-516-512-3133

 Email: info@creative-biomart.com  Fax: 1-631-938-8127

 45-1 Ramsey Road, Shirley, NY 11967, USA



AA Sequence

WHVWQQDEPQSQWVKDFANVYVDAVKDSGRDYVSQFESSSLGQQNLNLLLEN
WDTLGSTVSQLQERLGLPLTRDFWDNLEKETDWVRQEMNKDLEEVKQKVQPYLDEF
QKKWKEDVELYRQKVAPLGAELQESARQKLQELQGRLSPVAEEFRDRMRTHVDSL
RTQLAPHSEQMRESLAQRLAELKSNPTLNEYHTRAKTHLKTGEKARPALEDLRHSL
MPMLETLKTQVQSVIDKASETLTAQ

GENE INFORMATION

Gene Name

[Apoa1 apolipoprotein A-I \[Mus musculus \]](#)

Official Symbol

[Apoa1](#)

Synonyms

APOA1; apolipoprotein A-I; apo-AI; apoA-I; apolipoprotein A1; Sep2; Alp-1; Ltw-1;
Sep-1; Sep-2; Apoa-1; Brp-14; Lvtw-1; MGC102525;

Gene ID

[11806](#)

mRNA Refseq

[NM_009692](#)

Protein Refseq

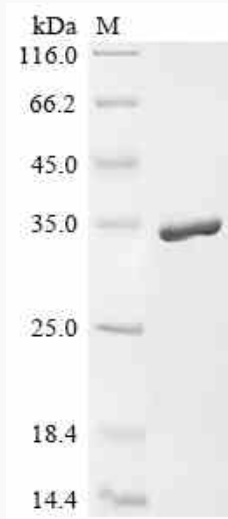
[NP_033822](#)

Tel: 1-631-559-9269 1-516-512-3133

Email: info@creative-biomart.com Fax: 1-631-938-8127

45-1 Ramsey Road, Shirley, NY 11967, USA

SDS-PAGE



 Tel: 1-631-559-9269 1-516-512-3133

 Email: info@creative-biomart.com  Fax: 1-631-938-8127

 45-1 Ramsey Road, Shirley, NY 11967, USA