

Recombinant Mouse Apoc4 protein, His & GST-tagged

Cat. No. Apoc4-1855M Lot. No. (See product label)

SPECIFICATION

Product Overview	Recombinant Mouse Apoc4 aa. (Met28~Gly124) fused with N-terminal His & GST tag was produced in E. coli cells.
Species	Mouse
Source	E.coli
ProteinLength	Met28~Gly124
Form	Freeze-dried powder
Molecular Mass	44kDa as determined by SDS-PAGE reducing conditions.
Endotoxin	<1.0EU per 1ug (determined by the LAL method)
Purity	>95%
Characteristic	The isoelectric point is 7.
Applications	SDS-PAGE; WB; ELISA; IP; CoIP; Purification; Amine Reactive Labeling.
Stability	The thermal stability is described by the loss rate of the target protein. The loss rate was determined by accelerated thermal degradation test, that is, incubate the protein at 37°C for 48h, and no obvious degradation and precipitation were observed. (Referring from China Biological Products Standard, which was calculated by the

 Tel: 1-631-559-9269 1-516-512-3133

 Email: info@creative-biomart.com  Fax: 1-631-938-8127

 45-1 Ramsey Road, Shirley, NY 11967, USA

Arrhenius equation.) The loss of this protein is less than 5% within the expiration date under appropriate storage condition.

Storage

Avoid repeated freeze/thaw cycles. Store at 2-8°C for one month. Aliquot and store at -80°C for 12 months.

Concentration

200µg/mL

Storage Buffer

20mM Tris, 150mM NaCl, pH8.0, containing 1mM EDTA, 1mM DTT, 0.01% sarcosyl, 5% Trehalose and Proclin300.

Reconstitution

Reconstitute in 20mM Tris, 150mM NaCl (pH8.0) to a concentration of 0.1-1.0mg/mL. Do not vortex.

GENE INFORMATION

Gene Name

[Apoc4 apolipoprotein C-IV \[Mus musculus \(house mouse\) \]](#)

Official Symbol

[Apoc4](#)

Synonyms

LOC683313; similar to keratin complex 2, basic, gene 6a; CK-6A; Krt6a; keratin, type II cytoskeletal 6A; K6a keratin; cytokeratin-6A; keratin K6; type-II keratin Kb6

Gene ID

[11425](#)

mRNA Refseq

[NM_007385.3](#)

Protein Refseq

[NP_031411.1](#)

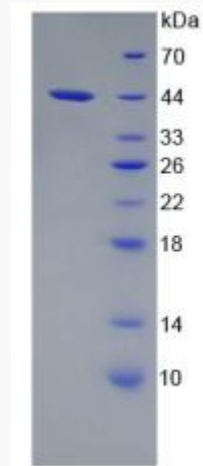
UniProt ID

[Q61268](#)

 Tel: 1-631-559-9269 1-516-512-3133

 Email: info@creative-biomart.com  Fax: 1-631-938-8127

 45-1 Ramsey Road, Shirley, NY 11967, USA



SDS-PAGE

 Tel: 1-631-559-9269 1-516-512-3133

 Email: info@creative-biomart.com  Fax: 1-631-938-8127

 45-1 Ramsey Road, Shirley, NY 11967, USA